

Finesse

Fine Pewter Hardware



CUPBOARD HARDWARE

2023



OUR STORY



Finesse Design are experts in the design and manufacture of architectural ironmongery such as cupboard handles, door hardware and window furniture. For over 20 years, we have proudly manufactured our wide product range from our modern factory facilities based in Consett, County Durham using traditional craftsmanship combined with modern technology.

All Finesse products are handmade from solid pewter - a precious metal known for its ageless and lustrous qualities. This should not be confused with cheaper alternative metals which are coated to mimic the finish of genuine pewter - also known as pewter effect. Pewter's natural, warm finish brings an inviting feel to the home with a mid-silver hue and warm blue tones. The living finish darkens beautifully over time - however with minimal care, the products original finish can be restored.

Our product range features many design-led and innovative collections to suit all decor schemes in the home including neutral, minimalist, rustic, contemporary and modern. Our range of pull handles, cabinet knobs and cup handles are ideal for use in kitchens, bedrooms, bathrooms and offices.

The Finesse product range can be purchased from our worldwide network of distributors. Visit our website at www.finessedesign.com for more information.

Watch Our Company Video

www.finessedesign.com/company-video





Image courtesy of Bernard Savage
Product shown: FD582 Chester cup handle

CONTENTS

Collection Name	Page	Knob	Cup	Pull
Immix - NEW	8-15	•	•	•
Chester	17	•	•	•
Wilton	18	•	•	•
Quebec	19	•	•	•
Dalton	20	•	•	•
Hutton	21	•	•	•
Harrington	22	•	•	•
Norton	23	•		•
Savoy	24	•		•
Hendon	25	•	•	•
Salisbury	26	•		•
Durham	27	•		•
Newton	28	•	•	•
Farrow	29	•	•	•
Fenton	30	•	•	•
Tunstall	31	•	•	•
Loxton	32	•		•
Healey	33	•	•	•
Taunton	34	•	•	•
Tokyo	35	•	•	•

CABINET HARDWARE

Product Category	Page
Pull Handles	36-49
Cabinet Knobs	50-61
Cup Handles	62-71
Bar Handles	72-77
Backing Plates	78-81

ELECTRICAL BACKPLATES

Product Category	Page
Sockets, Switches & Other Accessories	82-85

SUPPORT

Product Category	Page
Product Care & Maintenance	86
Installation Advice	86
Warranty	86



OUR SHOWROOM

We welcome all visitors to our showroom and manufacturing facilities based in the beautiful countryside of Consett, County Durham. Here you can browse our wide range of innovative and unique designs in situ as well as purchase any products or samples you require. Our friendly and knowledgeable customer service team are also on hand to answer any questions you may have. You can find us using the following address:

DJH Group Ltd, Project House, Villa Real, Consett, County Durham, DH8 6BP

If you are located further afield, our products can also be seen in various kitchen showrooms and architectural ironmongers nationwide. For more information, please visit www.finessedesign.com/distributors.



COLLECTIONS

The Finesse range of luxury pewter cupboard hardware has been thoughtfully designed to bring elegance, style and character to your cabinetry. Our collections organise products into families based on complementary design elements and aim to provide inspiration to those who wish to mix and match between products. Alternatively, our range of pull handles, cup handles and cabinet knobs feature the same stunning finish and can be combined whilst maintaining a harmonious feel in the home.



immix



The immix collection by Finesse Design is where traditional craftsmanship meets modern precision engineering to create an exclusive range of cupboard door handles. Handmade in the UK, the immix collection includes a range of pulls handles, T pulls, cabinet knobs and cup handles in a number of stunning finishes and distinctive textures. Using a unique combination of fine English pewter and stainless steel components, the immix range offers luxurious products with uncompromised quality and style.

Our Finishes

immix offers a premium collection of pewter cupboard handles available in 5 stunning finishes - stainless steel, true black, antique gold, graphite and bronze. Each finish beautifully highlights and contrasts the warm, charming tones of pewter. Finished using a hardwearing PVD coating, the immix collection offers excellent corrosion resistance and UV protection.



Stainless Steel

Stainless Steel offers a natural satin finish which is ideal for all types of décor schemes in the home. This finish beautifully complements the pewter elements of the handle to create a unique design.



True Black

True Black is an extremely durable PVD finish with a satin appearance. This finish creates a striking contrast with the pewter components and looks stunning when paired with light cupboard doors.



Antique Gold

Our satin Antique Gold PVD finish is extremely robust and hardwearing. This finish looks great when paired with dark cupboard doors, such as navy blue, emerald green and black.



Graphite

Our Graphite PVD finish offers cool grey tones with a subtle sheen - perfectly suited to contemporary interiors. This stylish finish is made to order with a leadtime of up to 3 weeks.

Bronze



Our Bronze PVD finish looks great when paired with both light and dark cupboard doors. The finish features warm brown undertones with a satin appearance. This finish is made to order with a leadtime of up to 3 weeks.

Our Designs

Available in three distinctive detailing textures, each pattern has been hand-cast into pewter by our extremely skilled team of artisans and craftsmen to create a design full of character and elegance.



Knurl



Reed



Spiral



Pull

immix KNURL



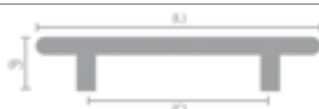
Product Code	Finish	Length (L)	Centres (C)	Projection (P)	Max. Door Thickness
IMX1001-S	Stainless Steel	134mm	64mm	38mm	40mm
IMX1001-B	True Black				
IMX1001-G	Antique Gold				
IMX1001-GR*	Graphite				
IMX1001-BR*	Bronze				
IMX1002-S	Stainless Steel	166mm	96mm	38mm	40mm
IMX1002-B	True Black				
IMX1002-G	Antique Gold				
IMX1002-GR*	Graphite				
IMX1002-BR*	Bronze				
IMX1003-S	Stainless Steel	198mm	128mm	38mm	40mm
IMX1003-B	True Black				
IMX1003-G	Antique Gold				
IMX1003-GR*	Graphite				
IMX1003-BR*	Bronze				
IMX1004-S	Stainless Steel	230mm	160mm	38mm	40mm
IMX1004-B	True Black				
IMX1004-G	Antique Gold				
IMX1004-GR*	Graphite				
IMX1004-BR*	Bronze				

T Pull

Designed with an optional **anti-rotation mechanism** - an innovative and unique feature which prevents the product from turning once installed.



Product Code (without anti-rotation)	Product Code (with anti-rotation)	Finish	Length (L)	Projection (P)	Max. Door Thickness
IMX1005-S	IMX1008-S	Stainless Steel	70mm	38mm	40mm (without anti-rotation)
IMX1005-B	IMX1008-B	True Black			
IMX1005-G	IMX1008-G	Antique Gold			
IMX1005-GR*	IMX1008-GR*	Graphite			27mm (with anti-rotation)
IMX1005-BR*	IMX1008-BR*	Bronze			



Knob



Stainless Steel



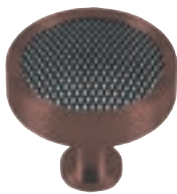
True Black



Antique Gold



Graphite



Bronze

Product Code	Finish	Diameter (D)	Projection (P)	Max. Door Thickness
IMX1006-S	Stainless Steel	40mm	38mm	40mm
IMX1006-B	True Black			
IMX1006-G	Antique Gold			
IMX1006-GR*	Graphite			
IMX1006-BR*	Bronze			

Cup



Stainless Steel



True Black



Antique Gold



Graphite



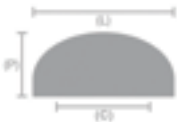
Bronze

Product Code	Finish	Length (L)	Centres (C)	Projection (P)	Max. Door Thickness
IMX1007-S	Stainless Steel	81mm	64mm	38mm	40mm
IMX1007-B	True Black				
IMX1007-G	Antique Gold				
IMX1007-GR*	Graphite				
IMX1007-BR*	Bronze				



Product shown: IMX1005-S Immix Knurl Stainless Steel t pull

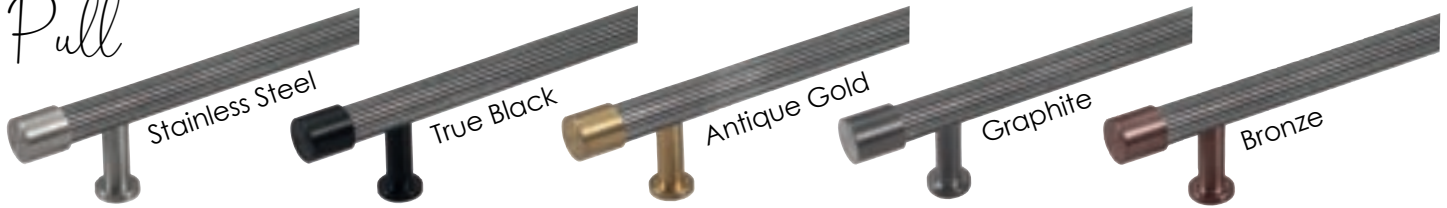
* This product is made to order.





immix REED

Pull



Product Code	Finish	Length (L)	Centres (C)	Projection (P)	Max. Door Thickness
IMX2001-S	Stainless Steel	134mm	64mm	38mm	40mm
IMX2001-B	True Black				
IMX2001-G	Antique Gold				
IMX2001-GR*	Graphite				
IMX2001-BR*	Bronze				
IMX2002-S	Stainless Steel	166mm	96mm	38mm	40mm
IMX2002-B	True Black				
IMX2002-G	Antique Gold				
IMX2002-GR*	Graphite				
IMX2002-BR*	Bronze				
IMX2003-S	Stainless Steel	198mm	128mm	38mm	40mm
IMX2003-B	True Black				
IMX2003-G	Antique Gold				
IMX2003-GR*	Graphite				
IMX2003-BR*	Bronze				
IMX2004-S	Stainless Steel	230mm	160mm	38mm	40mm
IMX2004-B	True Black				
IMX2004-G	Antique Gold				
IMX2004-GR*	Graphite				
IMX2004-BR*	Bronze				

T Pull

Designed with an optional **anti-rotation mechanism** - an innovative and unique feature which prevents the product from turning once installed.



Stainless Steel True Black Antique Gold Graphite Bronze

Product Code (without anti-rotation)	Product Code (with anti-rotation)	Finish	Length (L)	Projection (P)	Max. Door Thickness
IMX2005-S	IMX2008-S	Stainless Steel	70mm	38mm	40mm (without anti-rotation)
IMX2005-B	IMX2008-B	True Black			27mm (with anti-rotation)
IMX2005-G	IMX2008-G	Antique Gold			
IMX2005-GR*	IMX2008-GR*	Graphite			
IMX2005-BR*	IMX2008-BR*	Bronze			



Knob



Stainless Steel



True Black



Antique Gold



Graphite



Bronze

Product Code	Finish	Diameter (D)	Projection (P)	Max. Door Thickness
IMX2006-S	Stainless Steel	40mm	38mm	40mm
IMX2006-B	True Black			
IMX2006-G	Antique Gold			
IMX2006-GR*	Graphite			
IMX2006-BR*	Bronze			

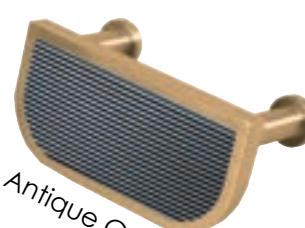
Cup



Stainless Steel



True Black



Antique Gold



Graphite



Bronze

Product Code	Finish	Length (L)	Centres (C)	Projection (P)	Max. Door Thickness
IMX2007-S	Stainless Steel	81mm	64mm	38mm	40mm
IMX2007-B	True Black				
IMX2007-G	Antique Gold				
IMX2007-GR*	Graphite				
IMX2007-BR*	Bronze				



Product shown: IMX2006-B Immix Reed True Black knob



* This product is made to order.



immix SPIRAL

Pull



Product Code	Finish	Length (L)	Centres (C)	Projection (P)	Max. Door Thickness
IMX3001-S	Stainless Steel	134mm	64mm	38mm	40mm
IMX3001-B	True Black				
IMX3001-G	Antique Gold				
IMX3001-GR*	Graphite				
IMX3001-BR*	Bronze				
IMX3002-S	Stainless Steel	166mm	96mm	38mm	40mm
IMX3002-B	True Black				
IMX3002-G	Antique Gold				
IMX3002-GR*	Graphite				
IMX3002-BR*	Bronze				
IMX3003-S	Stainless Steel	198mm	128mm	38mm	40mm
IMX3003-B	True Black				
IMX3003-G	Antique Gold				
IMX3003-GR*	Graphite				
IMX3003-BR*	Bronze				
IMX3004-S	Stainless Steel	230mm	160mm	38mm	40mm
IMX3004-B	True Black				
IMX3004-G	Antique Gold				
IMX3004-GR*	Graphite				
IMX3004-BR*	Bronze				

T Pull

Designed with an optional **anti-rotation mechanism** - an innovative and unique feature which prevents the product from turning once installed.



Stainless Steel

True Black

Antique Gold

Graphite

Bronze

Product Code (without anti-rotation)	Product Code (with anti-rotation)	Finish	Length (L)	Projection (P)	Max. Door Thickness
IMX3005-S	IMX3008-S	Stainless Steel	70mm	38mm	40mm (without anti-rotation)
IMX3005-B	IMX3008-B	True Black			27mm (with anti-rotation)
IMX3005-G	IMX3008-G	Antique Gold			
IMX3005-GR*	IMX3008-GR*	Graphite			
IMX3005-BR*	IMX3008-BR*	Bronze			



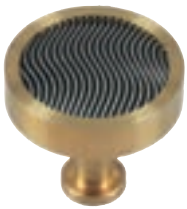
Knob



Stainless Steel



True Black



Antique Gold



Graphite



Bronze

Product Code	Finish	Diameter (D)	Projection (P)	Max. Door Thickness
IMX3006-S	Stainless Steel	40mm	38mm	40mm
IMX3006-B	True Black			
IMX3006-G	Antique Gold			
IMX3006-GR*	Graphite			
IMX3006-BR*	Bronze			

Cup



Stainless Steel



True Black



Antique Gold



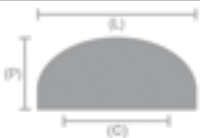
Graphite



Bronze

Product Code	Finish	Length (L)	Centres (C)	Projection (P)	Max. Door Thickness
IMX3007-S	Stainless Steel	81mm	64mm	38mm	40mm
IMX3007-B	True Black				
IMX3007-G	Antique Gold				
IMX3007-GR*	Graphite				
IMX3007-BR*	Bronze				

Product shown: IMX3003-G Immix Spiral Antique Gold pull handle



* This product is made to order.

Finesse

Fine Pewter Hardware



HANDMADE IN THE UK

All Finesse products are handmade in our factory facilities based in Consett, County Durham. Using a combination of traditional craftsmanship and modern technology, we are able to produce high quality products from the finest materials.

Although we aim to stock the majority of our product range, in the unlikely event that a product is out of stock, there will be a short leadtime of up to 2 weeks from when we receive the order *.

* Please note: This does not apply to made to order products.



NATURAL FINISH

Pewter offers a stunning, natural finish which is often described as having rustic and authentic qualities. The material offers a mid silver finish with warm blue tones and is perfectly suited to cottages, period homes and farmhouses.

All Finesse products have the same natural pewter finish. Therefore, Finesse products can be combined in various applications throughout the home for a complementary look.



UNIQUE DESIGNS

The Finesse range includes many unique and innovative designs to suit all types of decor schemes in the home. Choose between our range of pull handles, cup handles and cabinet knobs.

For those who wish to mix and match between handles, we have created collections of products with similar designs to inspire your project.

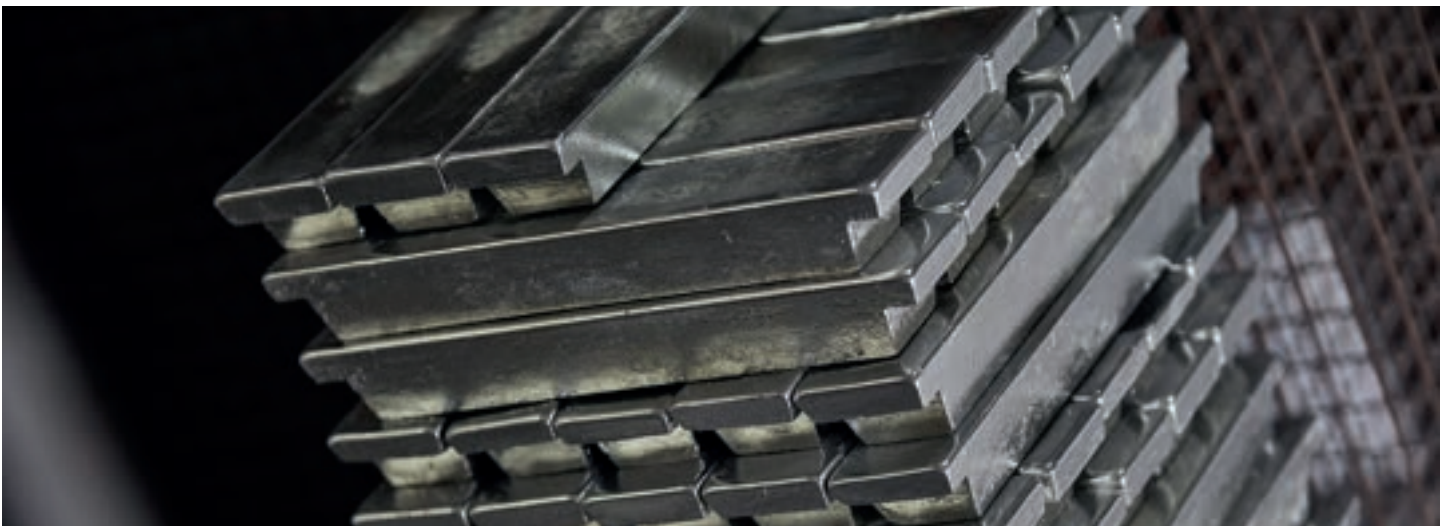




Image courtesy of Bernard Savage
 Product shown: FD593 Chester pull handle
 and FD582 Chester cup handle

PULL



Product Code	Length (L)	Centres (C)	Projection (P)	Max. Door Thickness
FD593	180mm	160mm	30mm	19mm*
FD594	240mm	224mm	30mm	19mm*

CUP



Product Code	Length (L)	Centres (C)	Projection (P)	Max. Door Thickness
FD582	100mm	76mm	20mm	19mm*

KNOB



Product Code	Diameter (D)	Base (B)	Projection (P)	Max. Door Thickness
FD574	36mm	19mm	32mm	19mm*
FD575	40mm	19mm	32mm	19mm*

Optional Backplates (To be Purchased Separately)

Product Code	Image	Diameter
PBP002		32mm x 32mm
PBP007		43mm



*For thicker doors, please contact us for longer fixings.



PULL



Product Code	Length (L)	Centres (C)	Projection (P)	Max. Door Thickness
PPH017	110mm	64mm	25mm	19mm*
PPH016	145mm	96mm	25mm	19mm*

CUP



Product Code	Length (L)	Centres (C)	Projection (P)	Max. Door Thickness
PCH001	92mm	64mm	20mm	19mm*

KNOB (Oval)



Product Code	Diameter (D)	Base (B)	Projection (P)	Max. Door Thickness
PCK009	44 x 32mm	10mm	28mm	19mm*

Optional Backplates (To be Purchased Separately)

Product Code	Image	Diameter
PBP004		40mm
PBP009		27mm

For more backplate options, please see page 79-80.



*For thicker doors, please contact us for longer fixings.



PULL



Product Code	Length (L)	Centres (C)	Projection (P)	Max. Door Thickness
FD597	178mm	128mm	40mm	19mm*

CUP



Product Code	Length (L)	Centres (C)	Projection (P)	Max. Door Thickness
FD660	92mm	76mm	28mm	19mm*

KNOB

(Supplied with an optional backplate)



Product Code	Diameter (D)	Base (B)		Projection (P)	Max. Door Thickness
		With Backplate	Without Backplate		
FD661	30mm	40mm	11mm	28mm	19mm*



*For thicker doors, please contact us for longer fixings.



PULL



Product Code	Length (L)	Centres (C)	Projection (P)	Max. Door Thickness
FD664	95mm	64mm	38mm	19mm*
FD665	160mm	128mm	38mm	19mm*

CUP



Product Code	Length (L)	Centres (C)	Projection (P)	Max. Door Thickness
FD503	122mm	64mm	23mm	19mm*
FD504	155mm	96mm	23mm	19mm*

KNOB

(Oval)



Product Code	Diameter (D)	Base (B)	Projection (P)	Max. Door Thickness
FD666	50x28mm	100x30mm	33mm	19mm*



*For thicker doors, please contact us for longer fixings.

DALTON

Image courtesy of JM Interiors
Product shown: PPH011 Hutton pull handle



PULL



Product Code	Length (L)	Centres (C)	Projection (P)	Max. Door Thickness
PPH011	119mm	96mm	25mm	19mm*
PPH012	155mm	128mm	28mm	19mm*

CUP



Product Code	Length (L)	Centres (C)	Projection (P)	Max. Door Thickness
PCH002	95mm	64mm	24mm	19mm*

KNOB (Oval)



Product Code	Diameter (D)	Base (B)	Projection (P)	Max. Door Thickness
PCK008	44x32mm	10mm	28mm	19mm*

Optional Backplates (To be Purchased Separately)		
Product Code	Image	Diameter
PBP004		40mm
PBP009		27mm

For more backplate options, please see page 79-80.



*For thicker doors, please contact us for longer fixings.



PULL



Product Code	Length (L)	Centres (C)	Projection (P)	Max. Door Thickness
FD526	160mm	128mm	35mm	19mm*
FD527	190mm	96mm	35mm	19mm*

CUP



Product Code	Length (L)	Centres (C)	Projection (P)	Max. Door Thickness
FD669	94mm	76mm	26mm	19mm*

KNOB



Product Code	Diameter (D)	Base (B)	Projection (P)	Max. Door Thickness
FD291	24mm	12mm	25mm	19mm*
FD292	30mm	15mm	25mm	19mm*

Optional Backplates (To be Purchased Separately)		
Product Code	Image	Diameter
PBP004		40mm
PBP007		43mm

For more backplate options, please see page 79-80.



*For thicker doors, please contact us for longer fixings.



PULL



Product Code	Length (L)	Centres (C)	Projection (P)	Max. Door Thickness
FD682	182mm	96mm	36mm	19mm*
FD683	213mm	128mm	36mm	19mm*

T-PULL



Product Code	Length (L)	Base (B)	Projection (P)	Max. Door Thickness
FD681	80mm	24mm	36mm	19mm*

KNOB

(Supplied with an optional backplate)



Product Code	Diameter (D)	Base (B)		Projection (P)	Max. Door Thickness
		With Backplate	Without Backplate		
FD684	15mm	20mm	14mm	38mm	19mm*
FD685	20mm	20mm	14mm	38mm	19mm*



Image courtesy of Fortress Kitchens
Product shown: FD683 Norton pull handle

*For thicker doors, please contact us for longer fixings.

PULL



Product Code	Length (L)	Centres (C)	Projection (P)	Max. Door Thickness
FD689	182mm	96mm	37mm	19mm*
FD690	212mm	128mm	37mm	19mm*

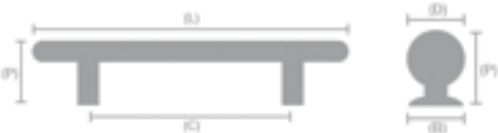


KNOB

(Supplied with an optional backplate)



Product Code	Diameter (D)	Base (B)		Projection (P)	Max. Door Thickness
		With Backplate	Without Backplate		
FD294	25mm	21mm	11mm	32mm	19mm*
FD295	35mm	21mm	11mm	32mm	19mm*



*For thicker doors, please contact us for longer fixings.



PULL



Product Code	Length (L)	Centres (C)	Projection (P)	Max. Door Thickness
FD531	140mm	128mm	32mm	19mm*
FD532	170mm	160mm	32mm	19mm*

CUP



Product Code	Length (L)	Centres (C)	Projection (P)	Max. Door Thickness
FD670	98mm	76mm	28mm	19mm*

KNOB



Product Code	Diameter (D)	Base (B)	Projection (P)	Max. Door Thickness
FD671	24mm	14mm	40mm	19mm*

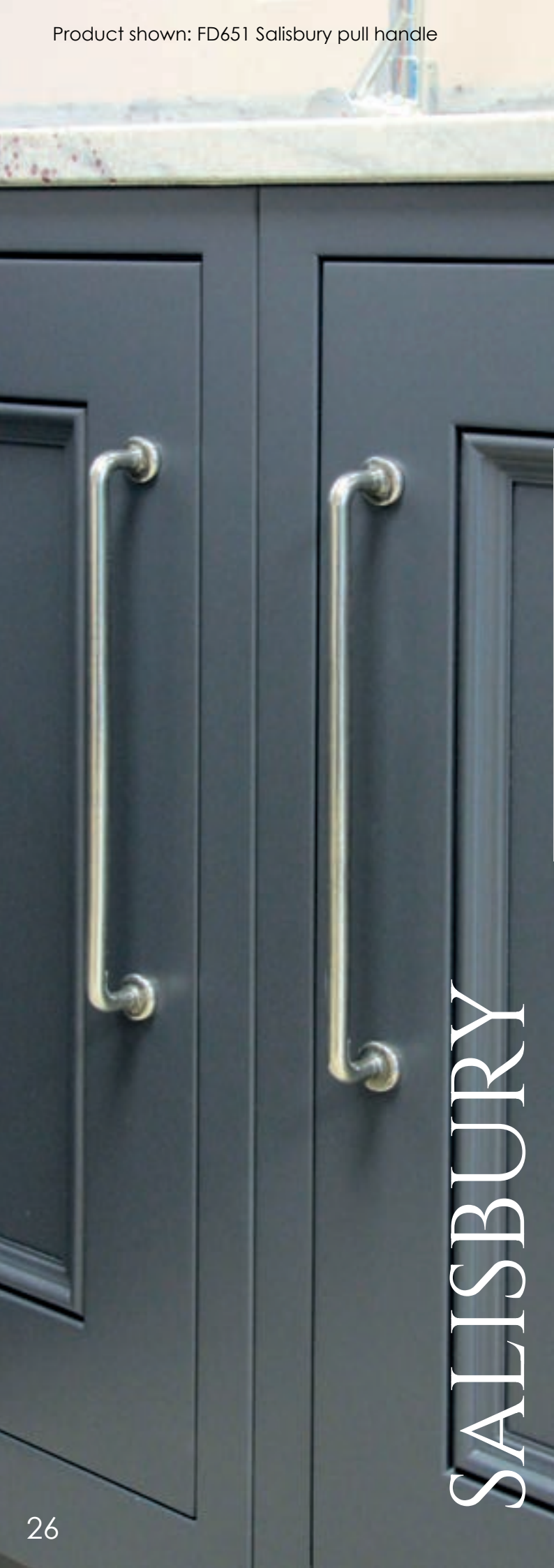
Optional Backplates (To be Purchased Seperately)

Product Code	Image	Diameter
PBP004		40mm
PBP007		43mm

For more backplate options, please see page 79-80.



*For thicker doors, please contact us for longer fixings.



PULL



Product Code	Length (L)	Centres (C)	Projection (P)	Max. Door Thickness
FD650	185mm	160mm	33mm	19mm*
FD651	313mm	288mm	33mm	19mm*



KNOB



Product Code	Diameter (D)	Base (B)	Projection (P)	Max. Door Thickness
FD687	30mm	18mm	36mm	19mm*
FD688	40mm	18mm	36mm	19mm*

Optional Backplates (To be Purchased Separately)		
Product Code	Image	Diameter
PBP004		40mm
PBP007		43mm

For more backplate options, please see page 79-80.



*For thicker doors, please contact us for longer fixings.

Image courtesy of Bernard Savage
Product shown: FD537 Durham pull handle



PULL



Product Code	Length (L)	Centres (C)	Projection (P)	Max. Door Thickness
FD565	178mm	96mm	38mm	19mm*
FD537	205mm	128mm	38mm	19mm*



KNOB



Product Code	Diameter (D)	Base (B)	Projection (P)	Max. Door Thickness
FD667	26mm	13mm	35mm	19mm*

Optional Backplates (To be Purchased Separately)		
Product Code	Image	Diameter
PBP004		40mm
PBP007		43mm

For more backplate options, please see page 79-80.



*For thicker doors, please contact us for longer fixings.

PULL



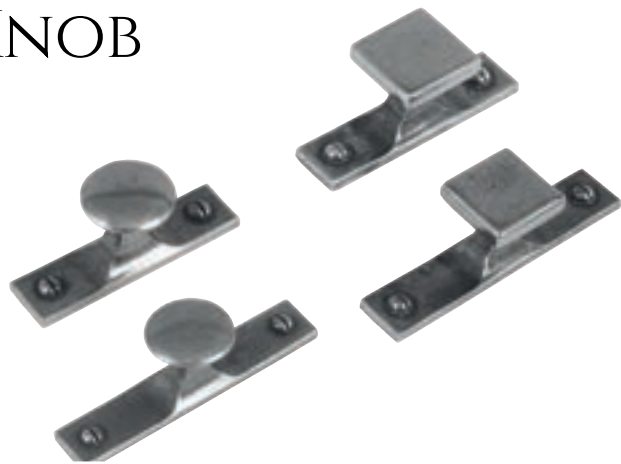
Product Code	Length (L)	Centres (C)	Projection (P)	Max. Door Thickness
FD524	156mm	96mm	32mm	19mm*
FD525	190mm	128mm	32mm	19mm*

CUP



Product Code	Length (L)	Centres (C)	Projection (P)	Max. Door Thickness
FD680	153mm	76mm	25mm	19mm*

KNOB



Product Code	Diameter (D)	Base (B)	Projection (P)	Max. Door Thickness
FD676	30mm	75x19mm	33mm	19mm*
FD677	30mm	100x19mm	33mm	19mm*
FD678	30x30mm	75x19mm	33mm	19mm*
FD679	30x30mm	100x19mm	33mm	19mm*



*For thicker doors, please contact us for longer fixings.

NEWTON

PULL



Product Code	Length (L)	Centres (C)	Projection (P)	Max. Door Thickness
FD528	166mm	128mm	36mm	19mm*
FD529	200mm	160mm	36mm	19mm*

CUP



Product Code	Length (L)	Centres (C)	Projection (P)	Max. Door Thickness
FD668	104mm	76mm	28mm	19mm*

KNOB

(Supplied with an optional backplate)



Product Code	Diameter (D)	Base (B)		Projection (P)	Max. Door Thickness
		With Backplate	Without Backplate		
FD290	20mm	38mm	11mm	38mm	19mm*



*For thicker doors, please contact us for longer fixings.

FARROW



FENTON

PULL



Product Code	Length (L)	Centres (C)	Projection (P)	Max. Door Thickness
PPH038	182mm	128mm	28mm	19mm*

CUP



Product Code	Length (L)	Centres (C)	Projection (P)	Max. Door Thickness
PCH008	90mm	64mm	24mm	19mm*

KNOB (Oval)



Product Code	Diameter (D)	Base (B)	Projection (P)	Max. Door Thickness
FD289	56x41mm	23mm	42mm	40mm

For doors thicker than 19mm, we recommend using a Fixing Screw Extension (FSE).

Optional Backplates (To be Purchased Separately)		
Product Code	Image	Diameter
PBP004		40mm
PBP007		43mm

For more backplate options, please see page 79-80.



*For thicker doors, please contact us for longer fixings.



TUNSTALL

PULL



Product Code	Length (L)	Centres (C)	Projection (P)	Max. Door Thickness
FD598	140mm	160mm	36mm	19mm*
FD599	205mm	224mm	40mm	19mm*

CUP



Product Code	Length (L)	Centres (C)	Projection (P)	Max. Door Thickness
FD663	92mm	64mm	28mm	19mm*

KNOB

(FD579 is supplied with an optional backplate)



Product Code	Diameter (D)	Base (B)		Projection (P)	Max. Door Thickness
		With Backplate	Without Backplate		
FD578	26mm	-	12mm	28mm	19mm*
FD579	43mm	30mm	11mm	28mm	19mm*

Optional Backplates (To be Purchased Separately)		
Product Code	Image	Diameter
PBP004		40mm
PBP007		43mm

For more backplate options, please see page 79-80.



*For thicker doors, please contact us for longer fixings.



LOXTON

PULL



Product Code	Length (L)	Centres (C)	Projection (P)	Max. Door Thickness
FD672	194mm	96mm	35mm	19mm*
FD673	228mm	128mm	35mm	19mm*
FD674	260mm	160mm	35mm	19mm*

T-PULL



Product Code	Length (L)	Base (B)	Projection (P)	Max. Door Thickness
FD675	100x30mm	98x28mm	38mm	19mm*



*For thicker doors, please contact us for longer fixings.



PULL



Product Code	Length (L)	Centres (C)	Projection (P)	Max. Door Thickness
FD591	189mm	160mm	32mm	19mm*
FD592	254mm	224mm	32mm	19mm*

CUP



Product Code	Length (L)	Centres (C)	Projection (P)	Max. Door Thickness
FD581	112mm	76mm	28mm	19mm*

KNOB

(Supplied with an optional backplate)



Product Code	Diameter (D)	Base (B)		Projection (P)	Max. Door Thickness
		With Backplate	Without Backplate		
FD572	30x30mm	30x30mm	10x10mm	32mm	19mm*
FD573	40x40mm	30x30mm	10x10mm	32mm	19mm*



Product shown: FD591 Healey pull handle

*For thicker doors, please contact us for longer fixings.

PULL



Product Code	Length (L)	Centres (C)	Projection (P)	Max. Door Thickness
FD694	180mm	96mm	38mm	19mm*
FD695	212mm	128mm	38mm	19mm*

CUP



Product Code	Length (L)	Centres (C)	Projection (P)	Max. Door Thickness
FD501	80mm	64mm	26mm	19mm*

KNOB



Product Code	Diameter (D)	Base (B)	Projection (P)	Max. Door Thickness
FD696	30mm	11mm	30mm	19mm*
FD555	40mm	13mm	30mm	19mm*

Optional Backplates (To be Purchased Separately)		
Product Code	Image	Diameter
PBP004		40mm
PBP007		43mm

For more backplate options, please see page 79-80.



*For thicker doors, please contact us for longer fixings.

TAUNTON



PULL



Product Code	Length (L)	Centres (C)	Projection (P)	Max. Door Thickness
FD654	135mm	96mm	26mm	19mm*
FD655	200mm	160mm	26mm	19mm*

CUP



Product Code	Length (L)	Centres (C)	Projection (P)	Max. Door Thickness
FD586	86mm	76mm	24mm	19mm*

KNOB

(Supplied with an optional backplate)



Product Code	Diameter (D)	Base (B)		Projection (P)	Max. Door Thickness
		With Backplate	Without Backplate		
FD568	20mm	38mm	11mm	32mm	19mm*
FD569	30mm	38mm	11mm	32mm	19mm*



Product shown: FD654 Tokyo pull handle

*For thicker doors, please contact us for longer fixings.

PULL HANDLES

Browse the Finesse range of cupboard pull handles. Available in various lengths and fixing centres to cater for cupboards and drawers throughout the home.



Image courtesy of Naked Kitchens
Product shown: FD237 Alston pull handle

immix KNURL

NEW



Product Code	Finish	Length (L)	Centres (C)	Projection (P)	Max. Door Thickness
IMX1001-S	Stainless Steel	134mm	64mm	38mm	40mm
IMX1001-B	True Black				
IMX1001-G	Antique Gold				
IMX1001-GR*	Graphite				
IMX1001-BR*	Bronze				
IMX1002-S	Stainless Steel	166mm	96mm	38mm	40mm
IMX1002-B	True Black				
IMX1002-G	Antique Gold				
IMX1002-GR*	Graphite				
IMX1002-BR*	Bronze				
IMX1003-S	Stainless Steel	198mm	128mm	38mm	40mm
IMX1003-B	True Black				
IMX1003-G	Antique Gold				
IMX1003-GR*	Graphite				
IMX1003-BR*	Bronze				
IMX1004-S	Stainless Steel	230mm	160mm	38mm	40mm
IMX1004-B	True Black				
IMX1004-G	Antique Gold				
IMX1004-GR*	Graphite				
IMX1004-BR*	Bronze				

The immix t-pull has been designed with an optional **anti-rotation mechanism** - an innovative and unique feature which prevents the product from turning once installed.



Stainless Steel



True Black



Antique Gold



Graphite



Bronze

Product Code (without anti-rotation)	Product Code (with anti-rotation)	Finish	Length (L)	Projection (P)	Max. Door Thickness
IMX1005-S	IMX1008-S	Stainless Steel	70mm	38mm	40mm (without anti-rotation)
IMX1005-B	IMX1008-B	True Black			
IMX1005-G	IMX1008-G	Antique Gold			
IMX1005-GR*	IMX1008-GR*	Graphite			27mm (with anti-rotation)
IMX1005-BR*	IMX1008-BR*	Bronze			



* This product is made to order.



immix REED



Product Code	Finish	Length (L)	Centres (C)	Projection (P)	Max. Door Thickness
IMX2001-S	Stainless Steel	134mm	64mm	38mm	40mm
IMX2001-B	True Black				
IMX2001-G	Antique Gold				
IMX2001-GR*	Graphite				
IMX2001-BR*	Bronze				
IMX2002-S	Stainless Steel	166mm	96mm	38mm	40mm
IMX2002-B	True Black				
IMX2002-G	Antique Gold				
IMX2002-GR*	Graphite				
IMX2002-BR*	Bronze				
IMX2003-S	Stainless Steel	198mm	128mm	38mm	40mm
IMX2003-B	True Black				
IMX2003-G	Antique Gold				
IMX2003-GR*	Graphite				
IMX2003-BR*	Bronze				
IMX2004-S	Stainless Steel	230mm	160mm	38mm	40mm
IMX2004-B	True Black				
IMX2004-G	Antique Gold				
IMX2004-GR*	Graphite				
IMX2004-BR*	Bronze				

The immix t-pull has been designed with an optional **anti-rotation mechanism** - an innovative and unique feature which prevents the product from turning once installed.



Product Code (without anti-rotation)	Product Code (with anti-rotation)	Finish	Length (L)	Projection (P)	Max. Door Thickness
IMX2005-S	IMX2008-S	Stainless Steel	70mm	38mm	40mm (without anti-rotation)
IMX2005-B	IMX2008-B	True Black			27mm (with anti-rotation)
IMX2005-G	IMX2008-G	Antique Gold			
IMX2005-GR*	IMX2008-GR*	Graphite			
IMX2005-BR*	IMX2008-BR*	Bronze			



* This product is made to order.

immix SPIRAL

NEW



Product Code	Finish	Length (L)	Centres (C)	Projection (P)	Max. Door Thickness
IMX3001-S	Stainless Steel	134mm	64mm	38mm	40mm
IMX3001-B	True Black				
IMX3001-G	Antique Gold				
IMX3001-GR*	Graphite				
IMX3001-BR*	Bronze				
IMX3002-S	Stainless Steel	166mm	96mm	38mm	40mm
IMX3002-B	True Black				
IMX3002-G	Antique Gold				
IMX3002-GR*	Graphite				
IMX3002-BR*	Bronze				
IMX3003-S	Stainless Steel	198mm	128mm	38mm	40mm
IMX3003-B	True Black				
IMX3003-G	Antique Gold				
IMX3003-GR*	Graphite				
IMX3003-BR*	Bronze				
IMX3004-S	Stainless Steel	230mm	160mm	38mm	40mm
IMX3004-B	True Black				
IMX3004-G	Antique Gold				
IMX3004-GR*	Graphite				
IMX3004-BR*	Bronze				

The immix t-pull has been designed with an optional **anti-rotation mechanism** - an innovative and unique feature which prevents the product from turning once installed.



Product Code (without anti-rotation)	Product Code (with anti-rotation)	Finish	Length (L)	Projection (P)	Max. Door Thickness
IMX3005-S	IMX3008-S	Stainless Steel	70mm	38mm	40mm (without anti-rotation)
IMX3005-B	IMX3008-B	True Black			
IMX3005-G	IMX3008-G	Antique Gold			
IMX3005-GR*	IMX3008-GR*	Graphite			27mm (with anti-rotation)
IMX3005-BR*	IMX3008-BR*	Bronze			



* This product is made to order.

CHESTER



Product Code	Length (L)	Centres (C)	Projection (P)	Max. Door Thickness
FD593	180mm	160mm	30mm	19mm*
FD594	240mm	224mm	30mm	19mm*

View the Chester knob on page 53 and cup handle on page 65.

WILTON



Product Code	Length (L)	Centres (C)	Projection (P)	Max. Door Thickness
PPH017	110mm	64mm	25mm	19mm*
PPH016	145mm	96mm	25mm	19mm*

View the Wilton knob on page 60 and cup handle on page 66.

ALSTON



Product Code	Length (L)	Centres (C)	Projection (P)	Max. Door Thickness
FD237	169mm	128mm	37mm	19mm*

View the Alston knob on page 58.

FARMHOUSE



Product Code	Length (L)	Centres (C)	Projection (P)	Max. Door Thickness
PPH002	122mm	64mm	28mm	19mm*
PPH001	155mm	96mm	28mm	19mm*

Image courtesy of Alistair Fleming
Product shown: FD237 Alston pull handle



*For thicker doors, please contact us for longer fixings.

HUTTON



Product Code	Length (L)	Centres (C)	Projection (P)	Max. Door Thickness
PPH011	119mm	96mm	25mm	19mm*
PPH012	155mm	128mm	25mm	19mm*

View the Hutton knob on page 55 and cup handle on page 68.

DURHAM



Product Code	Length (L)	Centres (C)	Projection (P)	Max. Door Thickness
FD565	178mm	96mm	40mm	19mm*
FD537	205mm	128mm	40mm	19mm*

View the Durham knob on page 60.

NORTON



Product Code	Length (L)	Centres (C)	Projection (P)	Max. Door Thickness
FD681	80mm	N/A	36mm	19mm*
FD682	182mm	96mm	36mm	19mm*
FD683	213mm	128mm	36mm	19mm*

View the Norton knob on page 60.

HENDON



Product Code	Length (L)	Centres (C)	Projection (P)	Max. Door Thickness
FD531	140mm	128mm	32mm	19mm*
FD532	170mm	160mm	32mm	19mm*

View the Hendon knob on page 58 and cup handle on page 67.

SALISBURY



Product Code	Length (L)	Centres (C)	Projection (P)	Max. Door Thickness
FD650	185mm	160mm	33mm	19mm*
FD651	313mm	288mm	33mm	19mm*

View the Salisbury knob on page 56.

HARRINGTON



Product Code	Length (L)	Centres (C)	Projection (P)	Max. Door Thickness
FD526	160mm	96mm	35mm	19mm*
FD527	190mm	128mm	35mm	19mm*

View the Harrington knob on page 54 and cup handle on page 67.

CONE



Product Code	Length (L)	Centres (C)	Projection (P)	Max. Door Thickness
PPH024	157mm	96mm	30mm	19mm*
PPH025	187mm	128mm	30mm	19mm*
PPH026	220mm	160mm	30mm	19mm*

ELDON

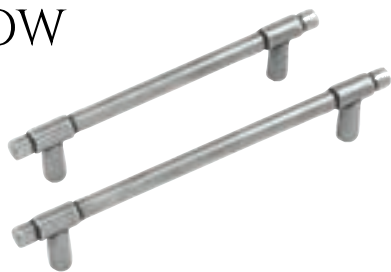


Product Code	Length (L)	Centres (C)	Projection (P)	Max. Door Thickness
FD520	136mm	96mm	25mm	19mm*
FD521	169mm	128mm	25mm	19mm*



*For thicker doors, please contact us for longer fixings.

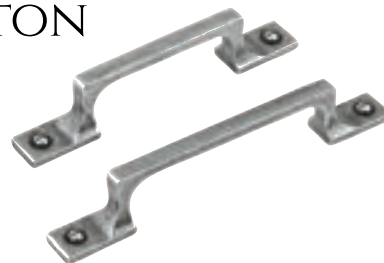
FARROW



Product Code	Length (L)	Centres (C)	Projection (P)	Max. Door Thickness
FD528	166mm	128mm	36mm	19mm*
FD529	200mm	160mm	36mm	19mm*

View the Farrow knob on page 57 and cup handle on page 71.

NEWTON



Product Code	Length (L)	Centres (C)	Projection (P)	Max. Door Thickness
FD524	156mm	96mm	32mm	19mm*
FD525	190mm	128mm	32mm	19mm*

View the Newton knob on page 57 and cup handle on page 71.

LINDALE



Product Code	Length (L)	Centres (C)	Projection (P)	Max. Door Thickness
FD272	164mm	128mm	29mm	19mm*
FD273	195mm	160mm	34mm	19mm*

BILTON



Product Code	Length (L)	Centres (C)	Projection (P)	Max. Door Thickness
FD243	177mm	96mm	32mm	19mm*

STAMFORD



Product Code	Length (L)	Centres (C)	Projection (P)	Max. Door Thickness
PPH030	151mm	128mm	40mm	19mm*
PPH029	180mm	160mm	40mm	19mm*

LOXTON



Product Code	Length (L)	Centres (C)	Projection (P)	Max. Door Thickness
FD675	100x30mm	-	38mm	19mm*
FD672	194mm	96mm	35mm	19mm*
FD673	228mm	128mm	35mm	19mm*
FD674	260mm	160mm	35mm	19mm*

BOWDEN



Product Code	Length (L)	Centres (C)	Projection (P)	Max. Door Thickness
PPH032	142mm	96mm	23mm	19mm*
PPH031	179mm	128mm	23mm	19mm*

BROUGHTON



Product Code	Length (L)	Centres (C)	Projection (P)	Max. Door Thickness
FD514	139mm	96mm	30mm	19mm*





Image courtesy of Bernard Savage
Product shown: FD593 Chester pull handle and FD582 Chester cup handle

GOSFORTH



Product Code	Length (L)	Centres (C)	Projection (P)	Max. Door Thickness
FD276	175mm	128mm	37mm	19mm*
FD277	205mm	160mm	37mm	19mm*

ROTHBURY



Product Code	Length (L)	Centres (C)	Projection (P)	Max. Door Thickness
FD232	174mm	128mm	38mm	19mm*
FD231	206mm	160mm	38mm	19mm*

VOYSEY



Product Code	Length (L)	Centres (C)	Projection (P)	Max. Door Thickness
PPH050	208mm	160mm	34mm	19mm*
PPH051	270mm	224mm	34mm	19mm*

MONTFORD



Product Code	Length (L)	Centres (C)	Projection (P)	Max. Door Thickness
FD535	173mm	128mm	28mm	19mm*



*For thicker doors, please contact us for longer fixings.

BELFORD



Product Code	Length (L)	Centres (C)	Projection (P)	Max. Door Thickness
FD541	183mm	96mm	32mm	19mm*

TAPER



Product Code	Length (L)	Centres (C)	Projection (P)	Max. Door Thickness
FD656	164mm	96mm	40mm	19mm*
FD657	194mm	128mm	40mm	19mm*

View the Taper knob on page 60.

AYDON



Product Code	Length (L)	Centres (C)	Projection (P)	Max. Door Thickness
FD241	134mm	96mm	32mm	19mm*

BELMONT



Product Code	Length (L)	Centres (C)	Projection (P)	Max. Door Thickness
FD253	184mm	128mm	34mm	19mm*
FD254	228mm	160mm	34mm	19mm*



Image courtesy of JM Interiors
Product shown: PPH030 Stamford pull handle



*For thicker doors, please contact us for longer fixings.

FENTON



Product Code	Length (L)	Centres (C)	Projection (P)	Max. Door Thickness
PPH038	182mm	128mm	28mm	19mm*

View the Fenton knob on page 54 and cup handle on page 66.

PAXTON



Product Code	Length (L)	Centres (C)	Projection (P)	Max. Door Thickness
PPH039	152mm	128mm	23mm	19mm*

View the Paxton knob on page 56.

GILPIN



Product Code	Length (L)	Centres (C)	Projection (P)	Max. Door Thickness
FD512	200mm	128mm	32mm	19mm*

HEALEY



Product Code	Length (L)	Centres (C)	Projection (P)	Max. Door Thickness
FD591	189mm	160mm	32mm	19mm*
FD592	254mm	224mm	32mm	19mm*

View the Healey knob on page 58 and cup handle on page 68.

QUEBEC



Product Code	Length (L)	Centres (C)	Projection (P)	Max. Door Thickness
FD597	178mm	128mm	40mm	19mm*

View the Quebec knob on page 57 and cup handle on page 65.

HADDON



Product Code	Length (L)	Centres (C)	Projection (P)	Max. Door Thickness
PPH040	167mm	96mm	30mm	19mm*
PPH041	200mm	128mm	34mm	19mm*

ADLER



Product Code	Length (L)	Centres (C)	Projection (P)	Max. Door Thickness
FD543	149mm	128mm	33mm	19mm*

TOKYO



Product Code	Length (L)	Centres (C)	Projection (P)	Max. Door Thickness
FD654	135mm	96mm	26mm	19mm*
FD655	200mm	160mm	26mm	19mm*

View the Tokyo knob on page 58 and cup handle on page 71.



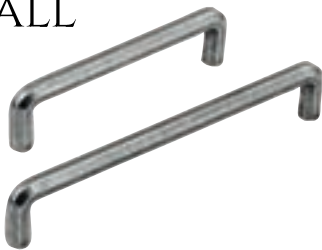
*For thicker doors, please contact us for longer fixings.

GOSWICK



Product Code	Length (L)	Centres (C)	Projection (P)	Max. Door Thickness
FD659	202mm	192mm	36mm	19mm*

TUNSTALL



Product Code	Length (L)	Centres (C)	Projection (P)	Max. Door Thickness
FD598	140mm	128mm	36mm	19mm*
FD599	205mm	192mm	40mm	19mm*

View the Tunstall knob on page 57 and cup handle on page 66.

ROCHESTER



Product Code	Length (L)	Centres (C)	Projection (P)	Max. Door Thickness
PPH003	215mm	160mm	40mm	19mm*

GRANGE



Product Code	Length (L)	Centres (C)	Projection (P)	Max. Door Thickness
FD540	112mm	64mm	31mm	19mm*



Image courtesy of JM Interiors
Product shown: FD210 Organic pull handle



*For thicker doors, please contact us for longer fixings.



Image courtesy of Barnes Kitchen
Product shown: FD582 Chester cup handle

FELLING



Product Code	Length (L)	Centres (C)	Projection (P)	Max. Door Thickness
PPH035	150mm	128mm	32mm	19mm*

ARCHER



Product Code	Length (L)	Centres (C)	Projection (P)	Max. Door Thickness
FD522	104mm	64mm	32mm	19mm*

TAUNTON



Product Code	Length (L)	Centres (C)	Projection (P)	Max. Door Thickness
FD694	180mm	96mm	38mm	19mm*
FD695	212mm	128mm	38mm	19mm*

View the Taunton knob on page 57 and cup handle on page 68.

STOW



Product Code	Length (L)	Centres (C)	Projection (P)	Max. Door Thickness
FD691	100mm	64mm	26mm	19mm*
FD692	164mm	128mm	26mm	19mm*
FD693	226mm	192mm	26mm	19mm*



*For thicker doors, please contact us for longer fixings.

ORGANIC



Product Code	Length (L)	Centres (C)	Projection (P)	Max. Door Thickness
FD211	184mm	128mm	30mm	19mm*
FD210	232mm	160mm	35mm	19mm*

CLIFTON



Product Code	Length (L)	Centres (C)	Projection (P)	Max. Door Thickness
FD511	80mm	64mm	40mm	19mm*

SAVOY



Product Code	Length (L)	Centres (C)	Projection (P)	Max. Door Thickness
FD689	182mm	96mm	37mm	19mm*
FD690	212mm	128mm	37mm	19mm*

View the Savoy knob on page 55.

RUSKIN



Product Code	Length (L)	Centres (C)	Projection (P)	Max. Door Thickness
FD595	216mm	128mm	36mm	19mm*
FD596	250mm	160mm	36mm	19mm*

DALTON



Product Code	Length (L)	Centres (C)	Projection (P)	Max. Door Thickness
FD664	95mm	64mm	38mm	19mm*
FD665	160mm	128mm	38mm	19mm*

View the Dalton knob on page 56 and cup handle on page 65.

GROVE



Product Code	Length (L)	Centres (C)	Projection (P)	Max. Door Thickness
FD259	192mm	128mm	29mm	19mm*
FD260	224mm	160mm	29mm	19mm*
FD261	258mm	192mm	29mm	19mm*

Image courtesy of Bernard Savage
Product shown: FD565 Durham pull handle



*For thicker doors, please contact us for longer fixings.



CABINET KNOBS

Oozing luxury and elegance, the Finesse range of pewter cabinet knobs are available in an array of shapes, sizes and styles. Pair with our range of backing plates to bring a bespoke and unique look to your cabinets.



immix KNURL

NEW



Stainless Steel



Graphite



True Black



Bronze



Antique Gold

Product Code	Finish	Diameter (D)	Projection (P)	Max. Door Thickness
IMX1006-S	Stainless Steel	40mm	38mm	40mm
IMX1006-B	True Black			
IMX1006-G	Antique Gold			
IMX1006-GR*	Graphite			
IMX1006-BR*	Bronze			

immix REED



Stainless Steel



Graphite



True Black



Bronze



Antique Gold

Product Code	Finish	Diameter (D)	Projection (P)	Max. Door Thickness
IMX2006-S	Stainless Steel	40mm	38mm	40mm
IMX2006-B	True Black			
IMX2006-G	Antique Gold			
IMX2006-GR*	Graphite			
IMX2006-BR*	Bronze			



* This product is made to order.

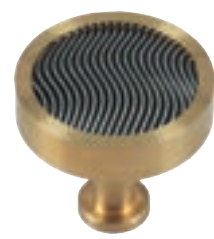
immix SPIRAL



Stainless Steel



True Black



Antique Gold



Graphite



Bronze

Product Code	Finish	Diameter (D)	Projection (P)	Max. Door Thickness
IMX3006-S	Stainless Steel	40mm	38mm	40mm
IMX3006-B	True Black			
IMX3006-G	Antique Gold			
IMX3006-GR*	Graphite			
IMX3006-BR*	Bronze			



Product shown: IMX2006-G Immix Reed Antique Gold knob



SWIRL



Product Code	Diameter (D)	Base (B)	Projection (P)	Max. Door Thickness
PCK001	45mm	15mm	38mm	40mm**

View optional backplates on page 79-80.

CHESTER



Product Code	Diameter (D)	Base (B)	Projection (P)	Max. Door Thickness
FD574	36mm	19mm	32mm	19mm*
FD575	40mm	19mm	32mm	19mm*

View the Chester pull handle on page 40 and cup handle on page 65.
View optional backplates on page 79-80.

HETTON



Product Code	Diameter (D)	Base (B)	Projection (P)	Max. Door Thickness
PCK035	30mm	11mm	28mm	19mm*
PCK036	36mm	11mm	28mm	19mm*
PCK037	40mm	11mm	28mm	19mm*

View optional backplates on page 79-80.

MALDON



Product Code	Diameter (D)	Base (B)	Projection (P)	Max. Door Thickness
FD566	30mm	11mm	20mm	19mm*
FD567	36mm	11mm	20mm	19mm*

View optional backplates on page 79-80.

Image courtesy of Alexander Lewis
Product shown: PCH001 Wilton cup handle and PPH040 Haddon pull handle



*For thicker doors, please contact us for longer fixings.
**For doors thicker than 19mm, we recommend using a Fixing Screw Extension (FSE). Please request this upon ordering.

BEEHIVE



Product Code	Diameter (D)	Base (B)	Projection (P)	Max. Door Thickness
PCK003	44mm	15mm	38mm	40mm**

View optional backplates on page 79-80.

FENTON

(Oval)



Product Code	Diameter (D)	Base (B)	Projection (P)	Max. Door Thickness
FD289	56x41mm	23mm	42mm	40mm**

View the Fenton pull handle on page 45 and cup handle on page 66.
View optional backplates on page 79-80.

SAVOY

(Supplied with an optional backplate)



Product Code	Diameter (D)	Base (B)		Projection (P)	Max. Door Thickness
		With Backplate	Without Backplate		
FD294	25mm	21mm	11mm	32mm	19mm*
FD295	35mm	21mm	11mm	32mm	19mm*

View the Savoy pull handle on page 48.

QUEBEC

(Supplied with an optional backplate)



Product Code	Diameter (D)	Base (B)		Projection (P)	Max. Door Thickness
		With Backplate	Without Backplate		
FD661	30mm	40mm	11mm	28mm	19mm*

View the Quebec pull handle on page 45 and cup on page 65.

BALL



Product Code	Diameter (D)	Base (B)	Projection (P)	Max. Door Thickness
PCK012	25mm	10mm	28mm	19mm*

View optional backplates on page 79-80.

DOME



Product Code	Diameter (D)	Base (B)	Projection (P)	Max. Door Thickness
PCK004	44mm	16mm	38mm	40mm**

View optional backplates on page 79-80.

HARRINGTON



Product Code	Diameter (D)	Base (B)	Projection (P)	Max. Door Thickness
FD291	24mm	12mm	25mm	19mm*
FD292	30mm	15mm	25mm	19mm*

View the Harrington pull handle on page 41 and cup on page 67.
View optional backplates on page 79-80.

HADDEN



Product Code	Diameter (D)	Base (B)	Projection (P)	Max. Door Thickness
PCK011	40mm	25mm	35mm	40mm**

View optional backplates on page 79-80.



*For thicker doors, please contact us for longer fixings.
**For doors thicker than 19mm, we recommend using a Fixing Screw Extension (FSE). Please request this upon ordering.



Image courtesy of Nathan Levick
 Product shown: PCK011 Hadden knob

FACET



Product Code	Diameter (D)	Base (B)	Projection (P)	Max. Door Thickness
PCK007	30mm	11mm	28mm	19mm*
PCK006	36mm	11mm	30mm	19mm*
PCK005	40mm	11mm	32mm	19mm*

View optional backplates on page 79-80.

HUTTON

(Hammered, Oval)



Product Code	Diameter (D)	Base (B)	Projection (P)	Max. Door Thickness
PCK008	44x32mm	10mm	28mm	19mm*

View the Hutton pull handle on page 41 and cup handle on page 68.

LUNA

(Supplied with an optional backplate)



Product Code	Diameter (D)	Base (B)		Projection (P)	Max. Door Thickness
		With Backplate	Without Backplate		
PCK033	45mm	44mm	12mm	22mm	19mm*

STROUD



Product Code	Diameter (D)	Base (B)	Projection (P)	Max. Door Thickness
FD557	40mm	13mm	30mm	19mm*

View optional backplates on page 79-80.



*For thicker doors, please contact us for longer fixings.

DALTON

(Oval)



Product Code	Diameter (D)	Base (B)	Projection (P)	Max. Door Thickness
FD666	50x28mm	100x30mm	33mm	19mm*

View the Dalton pull handle on page 48 and cup handle on page 65.

SALISBURY



Product Code	Diameter (D)	Base (B)	Projection (P)	Max. Door Thickness
FD687	30mm	18mm	36mm	19mm*
FD688	40mm	18mm	36mm	19mm*

View the Salisbury pull handle on page 41.

PAXTON



Product Code	Diameter (D)	Base (B)	Projection (P)	Max. Door Thickness
PCK038	37mm	14mm	26mm	19mm*

View the Paxton pull handle on page 45.

AMBLE



Product Code	Diameter (D)	Base (B)	Projection (P)	Max. Door Thickness
FD570	30mm	11mm	25mm	19mm*
FD571	40mm	11mm	25mm	19mm*

View optional backplates on page 79-80.

Image courtesy of Lethenty Cabinetmakers
 Product shown: FD527 Harrington pull handle and FD291 Harrington knob



*For thicker doors, please contact us for longer fixings.

ABBEY

(Supplied with an optional backplate)



Product Code	Diameter (D)	Base (B)		Projection (P)	Max. Door Thickness
		With Backplate	Without Backplate		
FD265	36mm	40mm	10mm	28mm	19mm*

FELTON



Product Code	Diameter (D)	Base (B)	Projection (P)	Max. Door Thickness
FD223	44mm	40mm	40mm	19mm*

TAUTON



Product Code	Diameter (D)	Base (B)	Projection (P)	Max. Door Thickness
FD696	30mm	11mm	30mm	19mm*
FD555	40mm	13mm	30mm	19mm*

View the Tauton pull handle on page 47 and cup handle on page 68.
View optional backplates on page 79-80.

TAPER

(Supplied with an optional backplate)



Product Code	Diameter (D)	Base (B)		Projection (P)	Max. Door Thickness
		With Backplate	Without Backplate		
FD576	20x20mm	30x30mm	10x10mm	32mm	19mm*
FD577	30x30mm	30x30mm	15x15mm	32mm	19mm*

View the Taper pull handle on page 44.

ECLIPSE

(Supplied with an optional backplate, oval)



Product Code	Diameter (D)	Base (B)		Projection (P)	Max. Door Thickness
		With Backplate	Without Backplate		
FD580	38x28mm	30x20mm	11mm	28mm	19mm*

View the Eclipse cup handle on page 71.

FARROW

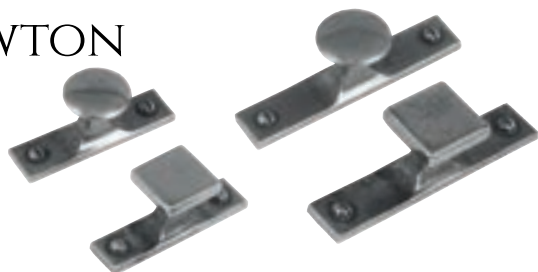
(Supplied with an optional backplate)



Product Code	Diameter (D)	Base (B)		Projection (P)	Max. Door Thickness
		With Backplate	Without Backplate		
FD290	20mm	38mm	11mm	38mm	19mm*

View the Farrow pull handle on page 42 and cup handle on page 71.

NEWTON



Product Code	Diameter (D)	Base (B)	Projection (P)	Max. Door Thickness
FD676	30mm	75x19mm	33mm	19mm*
FD677	30mm	100x19mm	33mm	19mm*
FD678	30x30mm	75x19mm	33mm	19mm*
FD679	30x30mm	100x19mm	33mm	19mm*

View the Newton pull handle on page 42 and cup handle on page 71.

TUNSTALL

(FD579 - supplied with an optional backplate)



Product Code	Diameter (D)	Base (B)		Projection (P)	Max. Door Thickness
		With Backplate	Without Backplate		
FD578	26mm	-	12mm	28mm	19mm*
FD579	43mm	30mm	11mm	28mm	19mm*

View the Tunstall pull handle on page 46 and cup handle on page 66.



*For thicker doors, please contact us for longer fixings.

ALSTON

(Supplied with an optional backplate)



Product Code	Diameter (D)	Base (B)		Projection (P)	Max. Door Thickness
		With Backplate	Without Backplate		
FD282	27mm	27mm	11mm	35mm	19mm*

View the Alston pull handle on page 40.

TOKYO

(Supplied with an optional backplate)



Product Code	Diameter (D)	Base (B)		Projection (P)	Max. Door Thickness
		With Backplate	Without Backplate		
FD568	20mm	38mm	11mm	32mm	19mm*
FD569	30mm	38mm	11mm	32mm	19mm*

View the Tokyo pull handle on page 45 and cup handle on page 71.

HENDON



Product Code	Diameter (D)	Base (B)	Projection (P)	Max. Door Thickness
FD671	24mm	14mm	40mm	19mm*

View the Hendon pull handle on page 41 and cup handle on page 67.

HEALEY

(Supplied with an optional backplate)



Product Code	Diameter (D)	Base (B)		Projection (P)	Max. Door Thickness
		With Backplate	Without Backplate		
FD572	30x30mm	30x30mm	10x10mm	32mm	19mm*
FD573	40x40mm	30x30mm	10x10mm	32mm	19mm*

View the Healey pull handle on page 45 and cup handle on page 68.



Image courtesy of Bernard Savage
Product shown: FD571 Amble knob and PBP004 backing plate



*For thicker doors, please contact us for longer fixings.





Image courtesy of The Main Company
Product shown: FD223 Felton knob

DURHAM



Product Code	Diameter (D)	Base (B)	Projection (P)	Max. Door Thickness
FD667	26mm	13mm	35mm	19mm*

View the Durham pull handle on page 41.

NORTON

(Supplied with an optional backplate)



Product Code	Diameter (D)	Base (B)		Projection (P)	Max. Door Thickness
		With Backplate	Without Backplate		
FD684	15mm	20mm	14mm	38mm	19mm*
FD685	20mm	20mm	14mm	38mm	19mm*

View the Norton pull handle on page 41.

CHATTON

(Supplied with an optional backplate, oval)



Product Code	Diameter (D)	Base (B)		Projection (P)	Max. Door Thickness
		With Backplate	Without Backplate		
PCK034	50x28mm	44mm	11mm	24mm	19mm*

WILTON

(Oval)



Product Code	Diameter (D)	Base (B)	Projection (P)	Max. Door Thickness
PCK009	44 x 32mm	11mm	28mm	19mm*

View the Wilton pull handle on page 40 and cup handle on page 66.

HAXBY

(Supplied with an optional backplate)



Product Code	Diameter (D)	Base (B)		Projection (P)	Max. Door Thickness
		With Backplate	Without Backplate		
FD293	25mm	21mm	13mm	30mm	19mm*





Image courtesy of Debenvale
Product shown: PCK003 Beehive knob

CUP HANDLES

The Finesse range of pewter cup handles are perfectly suited to cupboard drawers in kitchens, bedrooms and bathrooms. Combine with our range of pull handles and cabinet knobs to introduce a suite of pewter cupboard handles to your home with the same stunning finish.



immix KNURL

NEW

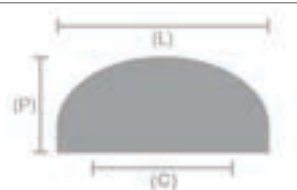


Product Code	Finish	Length (L)	Centres (C)	Projection (P)	Max. Door Thickness
IMX1007-S	Stainless Steel	81mm	64mm	38mm	40mm
IMX1007-B	True Black				
IMX1007-G	Antique Gold				
IMX1007-GR*	Graphite				
IMX1007-BR*	Bronze				

immix REED



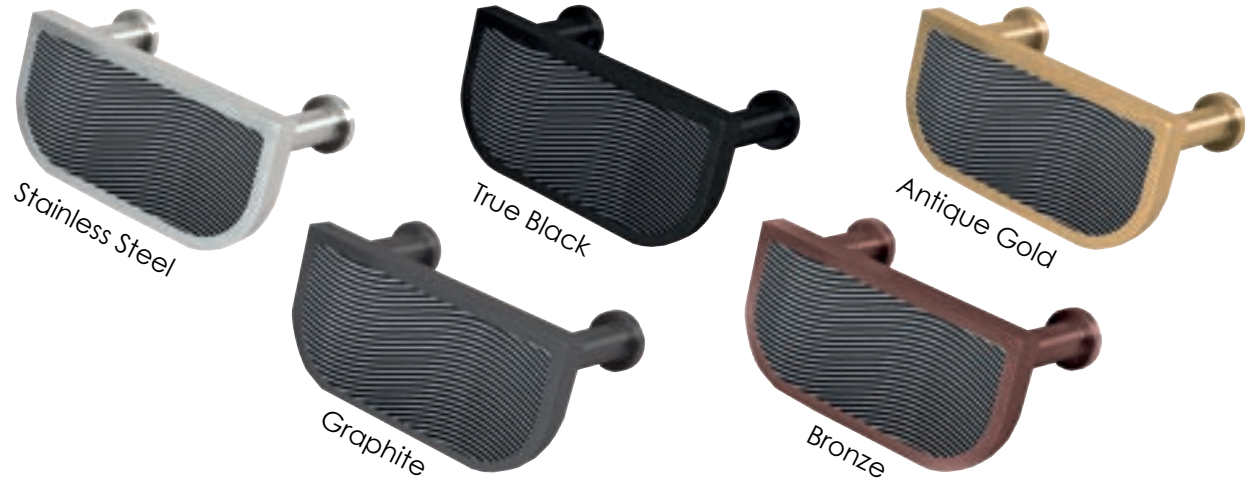
Product Code	Finish	Length (L)	Centres (C)	Projection (P)	Max. Door Thickness
IMX2007-S	Stainless Steel	81mm	64mm	38mm	40mm
IMX2007-B	True Black				
IMX2007-G	Antique Gold				
IMX2007-GR*	Graphite				
IMX2007-BR*	Bronze				



* This product is made to order.

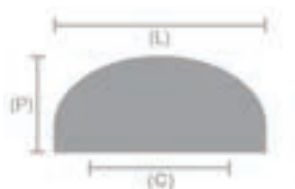
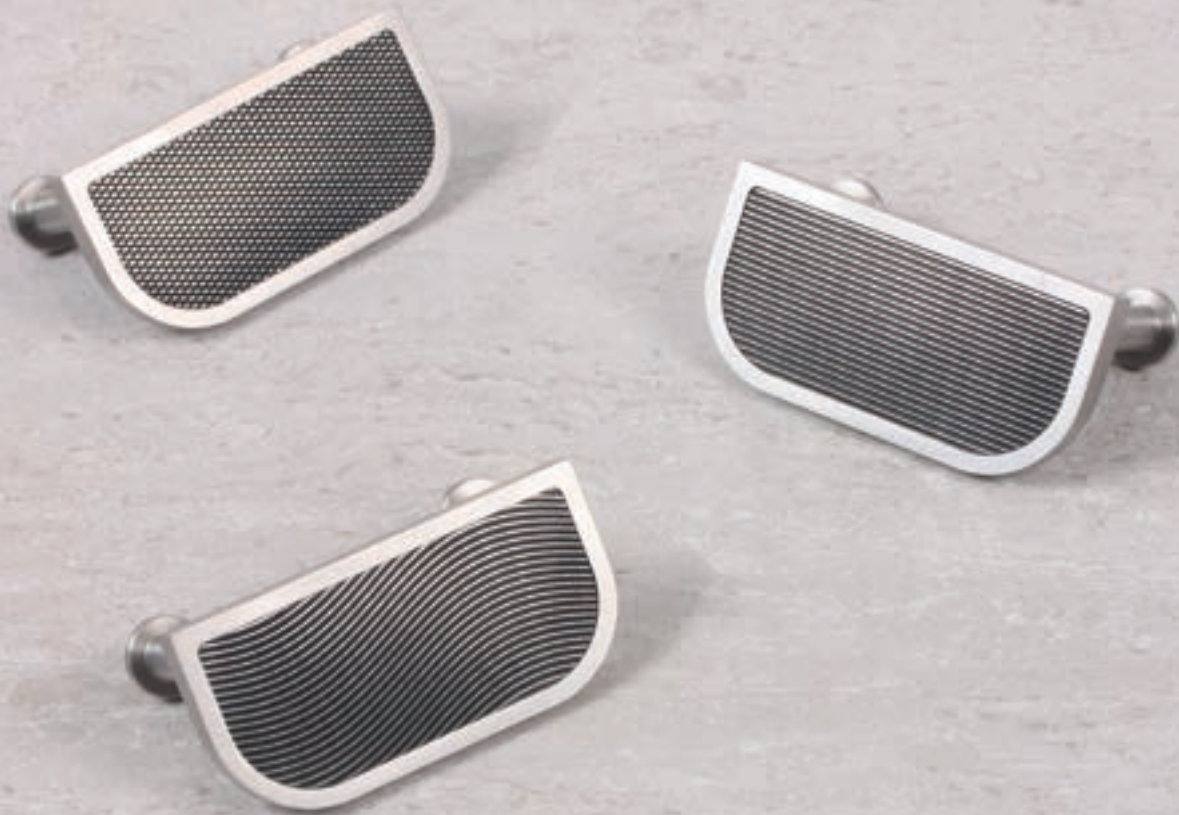
immix SPIRAL

NEW



Product Code	Finish	Length (L)	Centres (C)	Projection (P)	Max. Door Thickness
IMX3007-S	Stainless Steel	81mm	64mm	38mm	40mm
IMX3007-B	True Black				
IMX3007-G	Antique Gold				
IMX3007-GR*	Graphite				
IMX3007-BR*	Bronze				

Product shown: IMX1007-S, IMX2007-S and IMX3007-S Immix cup handle



* This product is made to order.

CHESTER



Product Code	Length (L)	Centres (C)	Projection (P)	Max. Door Thickness
FD582	100mm	76mm	24mm	19mm*

View the Chester knob on page 53 and pull handle on page 40.

CLASSIC



Product Code	Length (L)	Centres (C)	Projection (P)	Max. Door Thickness
FD583	98mm	64mm	27mm	19mm*

QUEBEC



Product Code	Length (L)	Centres (C)	Projection (P)	Max. Door Thickness
FD660	92mm	76mm	28mm	19mm*

View the Quebec knob on page 54 and pull handle on page 45.

DALTON

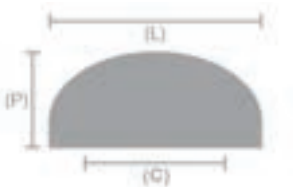


Product Code	Length (L)	Centres (C)	Projection (P)	Max. Door Thickness
FD503	122mm	64mm	23mm	19mm*
FD504	155mm	96mm	23mm	19mm*

View the Dalton knob on page 56 and pull handle on page 48.



Image courtesy of Bernard Savage
Product shown: FD582 Chester cup handle and FD593 Chester pull handle



*For thicker doors, please contact us for longer fixings.

ELTON



Product Code	Length (L)	Centres (C)	Projection (P)	Max. Door Thickness
PCH005	96mm	64mm	25mm	19mm*

FENTON



Product Code	Length (L)	Centres (C)	Projection (P)	Max. Door Thickness
PCH008	90mm	64mm	24mm	19mm*

View the Fenton knob on page 54 and pull handle on page 45.

WILTON



Product Code	Length (L)	Centres (C)	Projection (P)	Max. Door Thickness
PCH001	95mm	64mm	22mm	19mm*

View the Wilton knob on page 60 and pull handle on page 40.

GRAFTON



Product Code	Length (L)	Centres (C)	Projection (P)	Max. Door Thickness
PCH006	101mm	64mm	25mm	19mm*

TUNSTALL



Product Code	Length (L)	Centres (C)	Projection (P)	Max. Door Thickness
FD663	92mm	64mm	28mm	19mm*

View the Tunstall knob on page 57 and pull handle on page 46.

JUNIPER



Product Code	Length (L)	Centres (C)	Projection (P)	Max. Door Thickness
FD249	50mm	32mm	23mm	19mm*
FD248	162mm	128mm	23mm	19mm*

BRADLEY

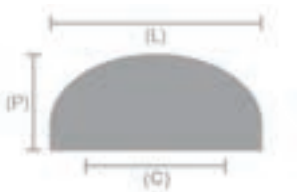


Product Code	Length (L)	Centres (C)	Projection (P)	Max. Door Thickness
FD205	50mm	32mm	24mm	19mm*
FD204	97mm	64mm	24mm	19mm*
FD203	164mm	96mm	24mm	19mm*
FD236	233mm	160mm	24mm	19mm*

BURFORD



Product Code	Length (L)	Centres (C)	Projection (P)	Max. Door Thickness
FD515	40mm	32mm	24mm	19mm*
FD516	72mm	64mm	24mm	19mm*
FD517	138mm	128mm	24mm	19mm*



*For thicker doors, please contact us for longer fixings.



Image courtesy of Collins Bespoke
 Product shown: FD516 Burford cup handle

HAMPTON



Product Code	Length (L)	Centres (C)	Projection (P)	Max. Door Thickness
FD298	145mm	64mm	28mm	19mm*

HENDON



Product Code	Length (L)	Centres (C)	Projection (P)	Max. Door Thickness
FD670	98mm	76mm	28mm	19mm*

View the Hendon knob on page 58 and pull handle on page 41.

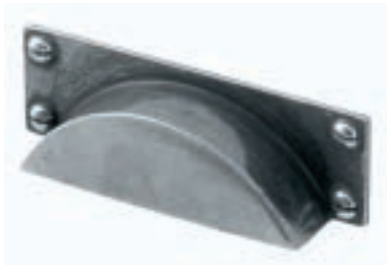
HARRINGTON



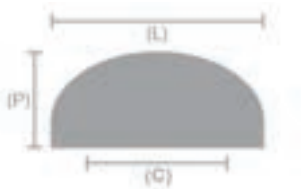
Product Code	Length (L)	Centres (C)	Projection (P)	Max. Door Thickness
FD669	94mm	76mm	26mm	19mm*

View the Harrington knob on page 54 and pull handle on page 41.

BLYTHE



Product Code	Length (L)	Centres (C)	Projection (P)	Max. Door Thickness
FD502	102mm	64mm	20mm	19mm*



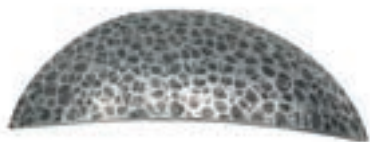
*For thicker doors, please contact us for longer fixings.

LEIGHTON



Product Code	Length (L)	Centres (C)	Projection (P)	Max. Door Thickness
PCH007	83mm	32mm	26mm	19mm*

HUTTON



Product Code	Length (L)	Centres (C)	Projection (P)	Max. Door Thickness
PCH002	95mm	64mm	24mm	19mm*

View the Hutton knob on page 55 and pull handle on page 41.

HEALEY



Product Code	Length (L)	Centres (C)	Projection (P)	Max. Door Thickness
FD581	112mm	76mm	28mm	19mm*

View the Healey knob on page 58 and pull handle on page 45.

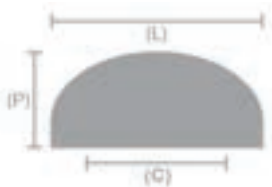
TAUNTON



Product Code	Length (L)	Centres (C)	Projection (P)	Max. Door Thickness
FD501	80mm	64mm	26mm	19mm*

View the Taunton knob on page 57 and pull handle on page 47.

Image courtesy of Baker & Baker
Product shown: PCH005 Elton cup handle



*For thicker doors, please contact us for longer fixings.



Image courtesy of Colin Bespoke
Product shown: PCH006 Grafton cup handle





Image courtesy of The Main Company
Product shown: FD203 Bradley cup handle

FARROW



Product Code	Length (L)	Centres (C)	Projection (P)	Max. Door Thickness
FD668	104mm	76mm	28mm	19mm*

View the Farrow knob on page 57 and pull handle on page 42.

ECLIPSE



Product Code	Length (L)	Centres (C)	Projection (P)	Max. Door Thickness
FD587	78mm	64mm	25mm	19mm*

View the Eclipse knob on page 57.

NEWTON



Product Code	Length (L)	Centres (C)	Projection (P)	Max. Door Thickness
FD680	153mm	76mm	27mm	19mm*

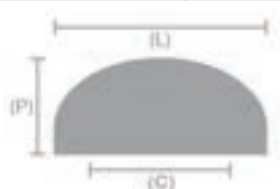
View the Newton knob on page 57 and pull handle on page 42.

TOKYO



Product Code	Length (L)	Centres (C)	Projection (P)	Max. Door Thickness
FD586	86mm	76mm	24mm	19mm*

View the Tokyo knob on page 58 and pull handle on page 45.



*For thicker doors, please contact us for longer fixings.

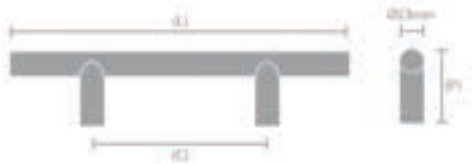
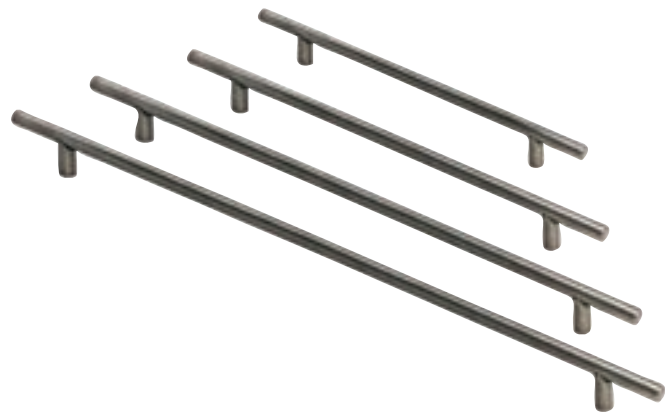
BAR HANDLES

Presenting the Finesse range of pewter bar handles - perfect for making a bold statement in your kitchen. Our Eden and Milton range of wooden bar handles are available in American black walnut or natural oak to bring a rustic feel to your home. For a unique style, our leather bar handles are a great choice. Designed with a hand stitched leather handle, our Jedburgh and Jarrow range bring luxury and sophistication to modern interiors.



Image courtesy of Stritt Design and Construction
Product shown: BH002 Heaton bar handle

BROMPTON



Product Code	Length (L)	Centres (C)	Projection (P)	Max. Door Thickness
BH013	230mm	160mm	40mm	40mm
BH014	296mm	224mm		
BH015	360mm	288mm		
BH016	424mm	352mm		

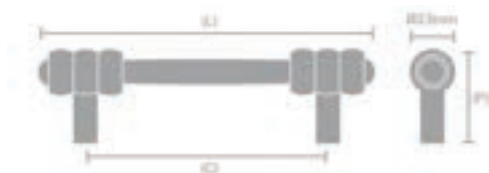
CHILTON



Product Code	Length (L)	Centres (C)	Projection (P)	Max. Door Thickness
BH005	172mm	160mm	40mm	40mm
BH006	235mm	224mm		
BH007	302mm	288mm		
BH008	367mm	352mm		

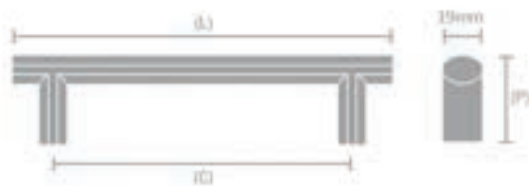


HEATON



Product Code	Length (L)	Centres (C)	Projection (P)	Max. Door Thickness
BH001	210mm	160mm	48mm	40mm
BH002	274mm	224mm		
BH003	338mm	288mm		
BH004	402mm	352mm		

CROXDALE



Product Code	Length (L)	Centres (C)	Projection (P)	Max. Door Thickness
BH017	200mm	160mm	40mm	40mm
BH018	262mm	224mm		
BH019	327mm	288mm		
BH020	390mm	352mm		

QUEBEC



Product Code	Length (L)	Centres (C)	Projection (P)	Max. Door Thickness
BH033	180mm	160mm	40mm	40mm
BH034	274mm	224mm		
BH035	338mm	288mm		
BH036	400mm	352mm		



Product shown: BH035 Quebec bar handle

MILTON

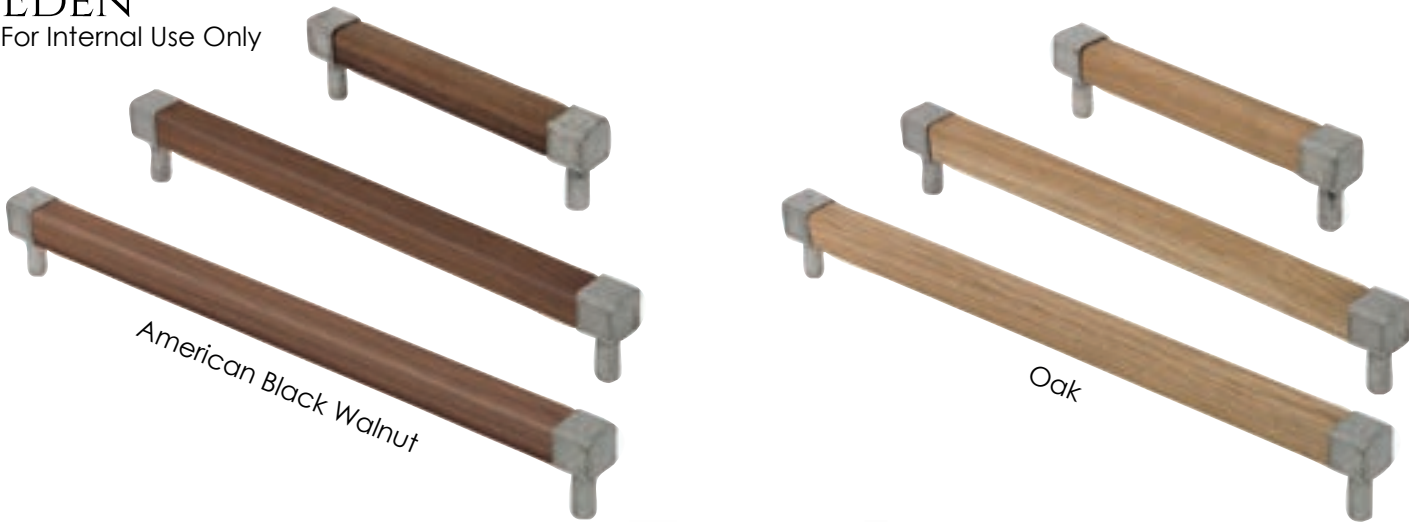
For Internal Use Only



Product Code	Finish	Length (L)	Centres (C)	Projection (P)	Max. Door Thickness
BH021	Oak	179mm	160mm	45mm	40mm
BH024	American Black Walnut				
BH022	Oak	307mm	288mm	45mm	40mm
BH025	American Black Walnut				
BH023	Oak	371mm	352mm	45mm	40mm
BH026	American Black Walnut				

EDEN

For Internal Use Only



Product Code	Finish	Length (L)	Centres (C)	Projection (P)	Max. Door Thickness
BH027	Oak	179mm	160mm	45mm	40mm
BH030	American Black Walnut				
BH028	Oak	307mm	288mm	45mm	40mm
BH031	American Black Walnut				
BH029	Oak	371mm	352mm	45mm	40mm
BH032	American Black Walnut				

JARROW

Hand stitched English saddle leather. For internal use only.

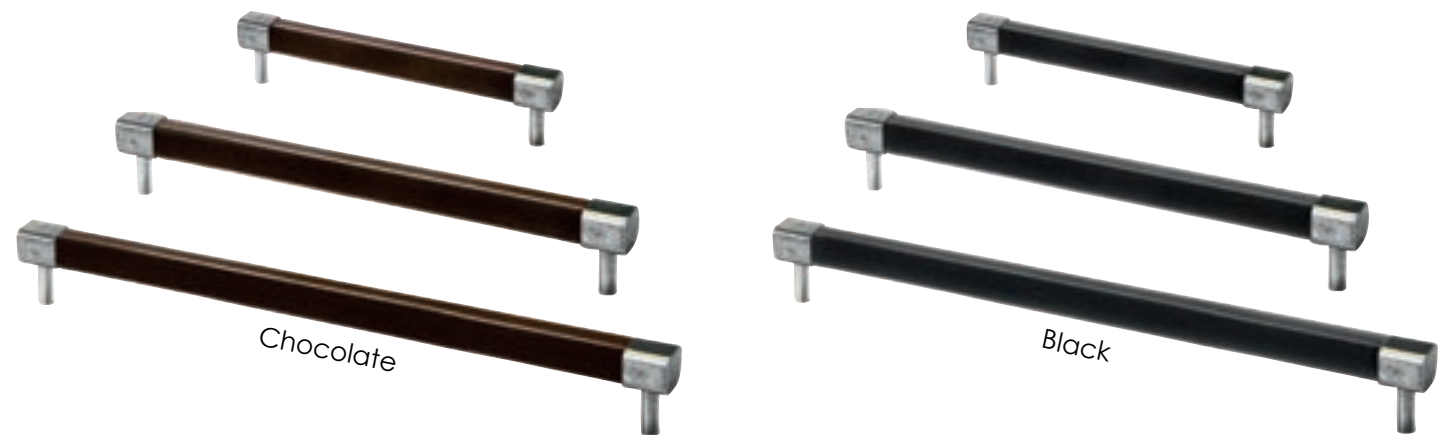


Product Code	Finish	Length (L)	Centres (C)	Projection (P)	Max. Door Thickness
FD409	Black	242mm	200mm	45mm	40mm
FD410	Chocolate				
FD412	Black	342mm	300mm	45mm	40mm
FD413	Chocolate				
FD415	Black	442mm	400mm	45mm	40mm
FD416	Chocolate				

This product is made to order and non-returnable unless faulty.

JEDBURGH

Hand stitched English saddle leather. For internal use only.



Product Code	Finish	Length (L)	Centres (C)	Projection (P)	Max. Door Thickness
FD400	Black	242mm	200mm	45mm	40mm
FD401	Chocolate				
FD403	Black	342mm	300mm	45mm	40mm
FD404	Chocolate				
FD406	Black	442mm	400mm	45mm	40mm
FD407	Chocolate				

This product is made to order and non-returnable unless faulty.



BACKING PLATES

The Finesse range of pewter backing plates are a great way to bring a unique and bespoke feel to cabinet knobs. Choose between a variety of shapes and styles to upgrade your cupboard hardware.





Product Code	Diameter	Projection
PBP002	32 x 32mm	3mm



FD570 (Amble)



FD555 (Taunton)



PCK006 (Facet)



FD557 (Stroud)



FD567 (Maldon)

For Use With:				
FD289 (Fenton)	FD291 (Harrington)	FD292 (Harrington)	FD555 (Taunton)	FD557 (Stroud)
FD566 (Maldon)	FD567 (Maldon)	FD570 (Amble)	FD571 (Amble)	FD574 (Chester)
FD575 (Chester)	FD578 (Tunstall)	FD667 (Durham)	FD671 (Hendon)	FD687 (Salisbury)
FD688 (Salisbury)	FD696 (Taunton)	PCK001 (Swirl)	PCK003 (Beehive)	PCK004 (Dome)
PCK005 (Facet)	PCK006 (Facet)	PCK007 (Facet)	PCK008 (Hutton)	PCK011 (Hadden)
PCK012 (Ball)	PCK035 (Hetton)	PCK036 (Hetton)	PCK037 (Hetton)	



Product Code	Diameter	Projection
PBP004	40mm	3mm



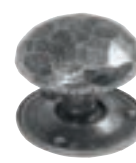
FD555 (Taunton)



FD557 (Stroud)



FD567 (Maldon)



PCK006 (Facet)

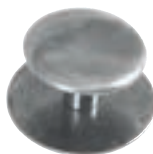


FD570 (Amble)

For Use With:				
FD289 (Fenton)	FD291 (Harrington)	FD292 (Harrington)	FD555 (Taunton)	FD557 (Stroud)
FD566 (Maldon)	FD567 (Maldon)	FD570 (Amble)	FD571 (Amble)	FD578 (Tunstall)
FD667 (Durham)	FD671 (Hendon)	FD696 (Taunton)	PCK003 (Beehive)	PCK004 (Dome)
PCK005 (Facet)	PCK006 (Facet)	PCK007 (Facet)	PCK008 (Hutton)	PCK009 (Wilton)
PCK011 (Hadden)	PCK012 (Ball)	PCK035 (Hetton)	PCK036 (Hetton)	PCK037 (Hetton)



Product Code	Diameter	Projection
PBP007	40mm	3mm



FD567 (Maldon)



FD557 (Stroud)



FD570 (Amble)



PCK009 (Wilton)



FD291 (Harrington)

For Use With:				
FD289 (Fenton)	FD291 (Harrington)	FD292 (Harrington)	FD555 (Taunton)	FD557 (Stroud)
FD566 (Maldon)	FD567 (Maldon)	FD570 (Amble)	FD571 (Amble)	FD574 (Chester)
FD575 (Chester)	FD578 (Tunstall)	FD667 (Durham)	FD671 (Hendon)	FD687 (Salisbury)
FD688 (Salisbury)	FD696 (Taunton)	PCK001 (Swirl)	PCK003 (Beehive)	PCK004 (Dome)
PCK005 (Facet)	PCK006 (Facet)	PCK007 (Facet)	PCK008 (Hutton)	PCK009 (Wilton)
PCK011 (Hadden)	PCK012 (Ball)	PCK035 (Hetton)	PCK036 (Hetton)	PCK037 (Hetton)



Product Code	Diameter	Projection
PBP008	38mm	3mm



PCK006 (Facet)



PCK009 (Wilton)



FD291 (Harrington)



FD696 (Taunton)



FD557 (Stroud)

For Use With:				
FD289 (Fenton)	FD291 (Harrington)	FD292 (Harrington)	FD555 (Taunton)	FD557 (Stroud)
FD566 (Maldon)	FD567 (Maldon)	FD570 (Amble)	FD571 (Amble)	FD578 (Tunstall)
FD667 (Durham)	FD671 (Hendon)	FD696 (Taunton)	PCK003 (Beehive)	PCK004 (Dome)
PCK005 (Facet)	PCK006 (Facet)	PCK007 (Facet)	PCK008 (Hutton)	PCK009 (Wilton)
PCK011 (Hadden)	PCK012 (Ball)	PCK035 (Hetton)	PCK036 (Hetton)	PCK037 (Hetton)



Product Code	Diameter	Projection
PBP009	27mm	3mm



FD575 (Chester)



PCK006 (Facet)



FD555 (Taunton)



FD291 (Harrington)



PCK036 (Hetton)

For Use With:				
FD291 (Harrington)	FD292 (Harrington)	FD555 (Taunton)	FD566 (Maldon)	FD567 (Maldon)
FD570 (Amble)	FD571 (Amble)	FD578 (Tunstall)	FD696 (Taunton)	PCK005 (Facet)
PCK006 (Facet)	PCK007 (Facet)	PCK008 (Hutton)	PCK009 (Wilton)	PCK011 (Hadden)
PCK012 (Ball)	PCK035 (Hetton)	PCK036 (Hetton)	PCK037 (Hetton)	



Product Code	Diameter	Projection
PBP010	21mm	4mm



PCK009 (Wilton)



FD555 (Taunton)



FD570 (Amble)

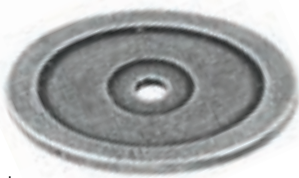


FD291 (Harrington)



PCK035 (Hetton)

For Use With:				
FD291 (Harrington)	FD292 (Harrington)	FD555 (Taunton)	FD566 (Maldon)	FD567 (Maldon)
FD570 (Amble)	FD571 (Amble)	PCK005 (Facet)	PCK006 (Facet)	PCK007 (Facet)
PCK008 (Hutton)	PCK009 (Wilton)	PCK011 (Hadden)	PCK012 (Ball)	PCK035 (Hetton)
PCK036 (Hetton)	PCK037 (Hetton)			



Oval

Product Code	Diameter	Projection
PBP012	40x28mm	3mm



PCK006 (Facet)



FD555 (Taunton)



FD567 (Maldon)



PCK009 (Wilton)



FD291 (Harrington)

For Use With:				
FD291 (Harrington)	FD292 (Harrington)	FD555 (Taunton)	FD555 (Taunton)	FD567 (Maldon)
PCK005 (Facet)	PCK006 (Facet)	PCK007 (Facet)	PCK008 (Hutton)	PCK009 (Wilton)
PCK035 (Hetton)	PCK036 (Hetton)	PCK037 (Hetton)		



Product Code	Diameter	Projection
PBP014	40mm	3mm



FD567 (Maldon)



FD291 (Harrington)



FD570 (Amble)



PCK009 (Wilton)



PCK036 (Hetton)

For Use With:				
FD291 (Harrington)	FD292 (Harrington)	FD566 (Maldon)	FD567 (Maldon)	FD570 (Amble)
FD571 (Amble)	PCK009 (Wilton)	PCK035 (Hetton)	PCK036 (Hetton)	PCK037 (Hetton)



Product Code	Diameter	Projection
PBP015	30mm	3mm



PCK036 (Hetton)



FD291 (Harrington)



FD570 (Amble)



PCK006 (Facet)



PCK009 (Wilton)

For Use With:				
FD291 (Harrington)	FD292 (Harrington)	FD566 (Maldon)	FD567 (Maldon)	FD570 (Amble)
FD571 (Amble)	PCK001 (Swirl)	PCK005 (Facet)	PCK006 (Facet)	PCK007 (Facet)
PCK008 (Hutton)	PCK009 (Wilton)	PCK035 (Hetton)	PCK036 (Hetton)	PCK037 (Hetton)

Product shown: FD571 Amble knob
with PBP004 backing plate



Product shown: FD661 Quebec knob
with PBP014 backing plate



Product shown: FD575 Chester knob
with PBP004 backing plate



Product shown: FD298 Alston knob
with PBP010 backing plate



ELECTRICAL ACCESSORIES

Our range of sockets, switches and other electrical accessories are made from solid pewter to match the stunning finish of our cupboard handles and door hardware. Our electrical wall plates have been designed for use with Crabtree platinum electrical components in satin chrome with a black trim.



Product shown: FD605 2 gang switched socket

1 Gang Blank Plate
Pewter Wall Plate Only
FD618



2 Gang Blank Plate
Pewter Wall Plate Only
FD619



1 Gang Switched Socket
Pewter Wall Plate Only
FD604



Crabtree

For Use With Crabtree Platinum Electrical Components:

Product Code	Component Description	Quantity
1314/1SC	13A 1 gang DP switched socket interior	1

2 Gang Switched Socket
Pewter Wall Plate Only
FD605



Crabtree

For Use With Crabtree Platinum Electrical Components:

Product Code	Component Description	Quantity
1316/1SC	13A 2 gang DP switched socket interior	1

1 Gang Switch
Pewter Wall Plate Only
FD600



For Use With Crabtree Platinum Electrical Components:		
Product Code	Component Description	Quantity
4530/7SC	10 Amp 2Way switch module - satin chrome	1
1901	Platinum grid mounting frame	1

2 Gang Switch
Pewter Wall Plate Only
FD601



For Use With Crabtree Platinum Electrical Components:		
Product Code	Component Description	Quantity
4530/7SC	10 Amp 2Way switch module - satin chrome	2
1902	Platinum grid mounting frame	1

3 Gang Switch
Pewter Wall Plate Only
FD602



For Use With Crabtree Platinum Electrical Components:		
Product Code	Component Description	Quantity
4530/7SC	10 Amp 2Way switch module - satin chrome	3
1903	Platinum grid mounting frame	1

4 Gang Switch
Pewter Wall Plate Only
FD603



For Use With Crabtree Platinum Electrical Components:		
Product Code	Component Description	Quantity
4530/7SC	10 Amp 2Way switch module - satin chrome	4
1904	Platinum grid mounting frame	1

6A Triple Pole Fan Isolator Switch
Pewter Wall Plate Only
FD606



For Use With Crabtree Platinum Electrical Components:		
Product Code	Component Description	Quantity
1017/1SC	Triple pole fan isolator interior	1

5A Unswitched Socket Insert
Pewter Wall Plate Only
FD607



For Use With Crabtree Platinum Electrical Components:		
Product Code	Component Description	Quantity
1340/1	5A socket insert - black	1

45A DP Switch Interior with Neon
Pewter Wall Plate Only
FD608



Crabtree

For Use With Crabtree Platinum Electrical Components:		
Product Code	Component Description	Quantity
1512/13SC	45A DP switch interior with neon	1

45A Cooker Control 13A Socket with Neon Interior
Pewter Wall Plate Only
FD609



Crabtree

For Use With Crabtree Platinum Electrical Components:		
Product Code	Component Description	Quantity
1522/13SC	45A cooker control unit 13A socket interior with neon	1

13A DP Switch FCU with Neon
Pewter Wall Plate Only
FD610



Crabtree

For Use With Crabtree Platinum Electrical Components:		
Product Code	Component Description	Quantity
1832/13SC	13A DP switched fused connection unit interior with neon	1

Shaver Socket Dual Voltage
Pewter Wall Plate Only
FD611



Crabtree

For Use With Crabtree Platinum Electrical Components:		
Product Code	Component Description	Quantity
1410/1	Shaver socket dual voltage interior	1

BT Master Module
Pewter Wall Plate Only
FD612



Crabtree

For Use With Crabtree Platinum Electrical Components:		
Product Code	Component Description	Quantity
7080/BK	BT master module - black	1
1091/1	1 gang 2 module comms mounting frame	1

BT Secondary Module
Pewter Wall Plate Only
FD613



Crabtree

For Use With Crabtree Platinum Electrical Components:		
Product Code	Component Description	Quantity
7071/BK	BT secondary module - black	1
1091/1	1 gang 2 module comms mounting frame	1

Triplex Communication Module
 Pewter Wall Plate Only
FD614



For Use With Crabtree Platinum Electrical Components:		
Product Code	Component Description	Quantity
7063/BK	TV/FM/SAT triplexer module - black	1
1091/1	1 gang 2 module comms mounting frame	1

TV Outlet (Male/Female) Module
 Pewter Wall Plate Only
FD615



For Use With Crabtree Platinum Electrical Components:		
Product Code	Component Description	Quantity
7065/BK	TV outlet (male) module - black	1
7067/BK	TV outlet (female) module - black	1
1091/1	1 gang 2 module comms mounting frame	1

RJ45 CAT 5E Double
 Pewter Wall Plate Only
FD616



For Use With Crabtree Platinum Electrical Components:		
Product Code	Component Description	Quantity
7172/BK	RJ45 Cat5e module - black	2
1091/1	1 gang 2 module comms mounting frame	1

Communication 2 Gang 4 Module
 Pewter Wall Plate Only
FD617



For Use With Crabtree Platinum Electrical Components:		
Product Code	Component Description	Quantity
1092/1	2 gang 4 module comms mounting frame (Order modules to suit your application)	1

2 Gang Switched Socket
 with USB
 Pewter Wall Plate Only
FD620



For Use With Crabtree Platinum Electrical Components:		
Product Code	Component Description	Quantity
1316USB/1SC	13A gang DP USB switched socket interior	1

Product shown: FD603 4 Gang Switch



SUPPORT



Product Care

Pewter

With minimal care, pewter will maintain its stunning, natural finish. We recommend the occasional clean of our pewter products with warm soapy water and dried with a soft cloth. As pewter is an aging metal, our products may darken slightly overtime. To restore pewters original finish, apply a light coat of non abrasive metal polish, such as 'brasso', and buff vigorously when dry to a shine.

Please note: We strongly recommend against the use of solvent cleaners or household polishes when cleaning our ironmongery, this will cause irreversible damage to the surface and may cause discolouration.

Wood

Our Eden and Milton wooden bar handles should be cleaned with a clear wax polish.

Leather

Our Jarrow and Jedburgh leather bar handles are best cleaned with a damp cloth and a light coat of clear shoe cream.

Immix

The immix collection should be cleaned occasionally with warm soapy water.



Warranty

All Finesse products are handmade using the finest materials to achieve the highest quality products. However, in the unlikely event that our products become defected or flawed overtime as a result of our manufacturing processes, all products are covered by our 2 year warranty and will be replaced, repaired or refunded. To claim under this warranty, please contact Finesse Design on 01207 500050.



Fixings

Pull Handles & Cup Handles

All Finesse pull handles and cup handles are supplied with M4 25mm fixings as standard to cater for a maximum door thickness of 20mm. For thicker doors up to 40mm, 45mm snap off bolts can be requested.

Cupboard Knobs

Most Finesse cupboard knobs are supplied with M4 25mm fixings to cater for a maximum door thickness of 20mm. For thicker doors, 45mm snap off bolts can be requested to cater for doors up to 40mm thick.

PCK001, PCK003, PCK004, PCK011, FD223 and FD289 cupboard knobs are supplied with 45mm snap-off bolts to cater for doors up to 40mm. For doors thicker than 19mm, we recommend the use of our fixing screw extension (FSE) to prevent the knob from overtightening overtime. Please request this upon ordering.

Bar Handles

All Finesse bar handles are supplied with 45mm snap-off bolts as standard to cater for a maximum door thickness of 40mm.

For 45mm snap-off screws, the snap off size is door thickness + 5mm.



Fitting

Care should be taken when fitting Finesse cupboard hardware. We recommend drilling a 5mm Ø pilot hole for all M4 fixings. Doors should be finished before adding your hardware to avoid paint and other finishes getting onto the product.



Finesse

Fine Pewter Hardware

'FINESSE' is a trading name of DJH Group Ltd.

Project House, Villa Real, Consett,
Co. Durham, DH8 6BP, UK.

t: +44 (0)1207 500050

f: +44 (0)1207 599757

E: sales@finessedesign.com

www.finessedesign.com

